



**ELECTRONIC COPY**

**LABORATORY GROWN DIAMOND REPORT**

LG627472155

Report verification at igi.org

**LABORATORY GROWN  
DIAMOND REPORT**

**LABORATORY GROWN DIAMOND REPORT**

**LABORATORY GROWN DIAMOND REPORT**

March 29, 2024  
 IGI Report Number **LG627472155**  
 Description **LABORATORY GROWN  
DIAMOND**  
 Shape and Cutting Style **SQUARE EMERALD CUT**  
 Measurements **6.30 X 6.01 X 4.11 MM**

**GRADING RESULTS**

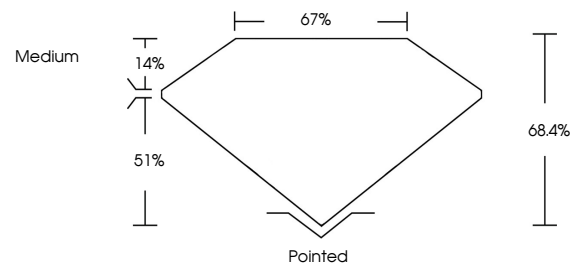
Carat Weight **1.49 CARAT**  
 Color Grade **D**  
 Clarity Grade **VVS 2**

**ADDITIONAL GRADING INFORMATION**

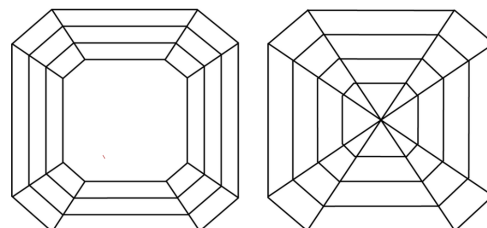
Polish **EXCELLENT**  
 Symmetry **EXCELLENT**  
 Fluorescence **NONE**  
 Inscription(s) **IGI LG627472155**

Comments: As Grown - No indication of post-growth treatment.  
 This Laboratory Grown Diamond was created by High Pressure High Temperature (HPHT) growth process.  
 Type II

**PROPORTIONS**



**CLARITY CHARACTERISTICS**



**KEY TO SYMBOLS**

Red symbols indicate internal characteristics.  
 Green symbols indicate external characteristics.

**GRADING SCALES**

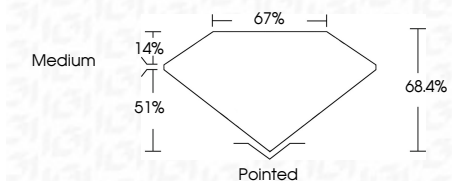
**CLARITY**

IF	VVS <sup>1-2</sup>	VS <sup>1-2</sup>	SI <sup>1-2</sup>	I <sup>1-3</sup>
Internally Flawless	Very Very Slightly Included	Very Slightly Included	Slightly Included	Included

**COLOR**

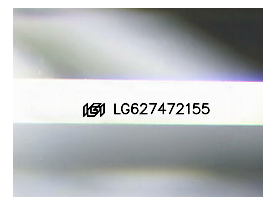
D	E	F	G	H	I	J	Faint	Very Light	Light
---	---	---	---	---	---	---	-------	------------	-------

March 29, 2024  
 IGI Report Number **LG627472155**  
 Description **LABORATORY GROWN  
DIAMOND**  
 Shape and Cutting Style **SQUARE EMERALD CUT**  
 Measurements **6.30 X 6.01 X 4.11 MM**  
**GRADING RESULTS**  
 Carat Weight **1.49 CARAT**  
 Color Grade **D**  
 Clarity Grade **VVS 2**



**ADDITIONAL GRADING INFORMATION**

Polish **EXCELLENT**  
 Symmetry **EXCELLENT**  
 Fluorescence **NONE**  
 Inscription(s) **IGI LG627472155**  
 Comments: As Grown - No indication of post-growth treatment.  
 This Laboratory Grown Diamond was created by High Pressure High Temperature (HPHT) growth process.  
 Type II



Sample Image Used



March 29, 2024  
 IGI Report No **LG627472155**  
**SQUARE EMERALD CUT**  
**6.30 X 6.01 X 4.11 MM**  
 Carat Weight **1.49 CARAT**  
 Color Grade **D**  
 Clarity Grade **VVS 2**  
 Depth **68.4%**  
 Table **67%**  
 Girdle **Medium**  
 Culet **Pointed**  
 Polish **EXCELLENT**  
 Symmetry **EXCELLENT**  
 Fluorescence **NONE**  
 Inscription(s) **IGI LG627472155**  
 Comments: As Grown - No indication of post-growth treatment.  
 This Laboratory Grown Diamond was created by High Pressure High Temperature (HPHT) growth process.  
 Type II