



ELECTRONIC COPY

LABORATORY GROWN DIAMOND REPORT

March 29, 2024
 IGI Report Number **LG627475970**
 Description **LABORATORY GROWN
DIAMOND**
 Shape and Cutting Style **EMERALD CUT**
 Measurements **8.66 X 6.33 X 4.39 MM**

GRADING RESULTS

Carat Weight **2.38 CARATS**
 Color Grade **H**
 Clarity Grade **SI 1**

ADDITIONAL GRADING INFORMATION

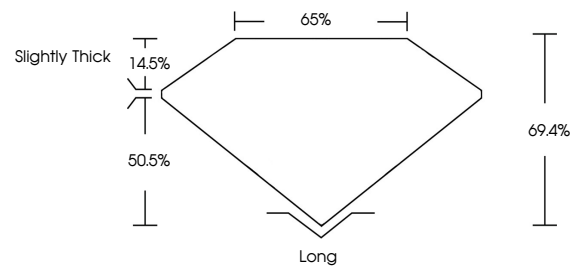
Polish **EXCELLENT**
 Symmetry **EXCELLENT**
 Fluorescence **NONE**
 Inscription(s) **IGI LG627475970**

Comments: This Laboratory Grown Diamond was created by Chemical Vapor Deposition (CVD) growth process and may include post-growth treatment. Type IIa

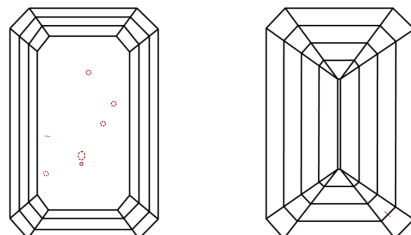
LABORATORY GROWN DIAMOND REPORT

LG627475970
 Report verification at igi.org

PROPORTIONS



CLARITY CHARACTERISTICS



KEY TO SYMBOLS

Red symbols indicate internal characteristics.
 Green symbols indicate external characteristics.

**LABORATORY GROWN
DIAMOND REPORT**

GRADING SCALES

CLARITY

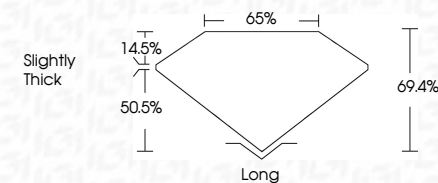
IF	VVS ¹⁻²	VS ¹⁻²	SI ¹⁻²	I ¹⁻³
Internally Flawless	Very Very Slightly Included	Very Slightly Included	Slightly Included	Included

COLOR

D	E	F	G	H	I	J	Faint	Very Light	Light

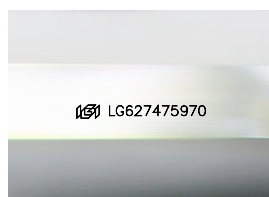
LABORATORY GROWN DIAMOND REPORT

March 29, 2024
 IGI Report Number **LG627475970**
 Description **LABORATORY GROWN
DIAMOND**
 Shape and Cutting Style **EMERALD CUT**
 Measurements **8.66 X 6.33 X 4.39 MM**
GRADING RESULTS
 Carat Weight **2.38 CARATS**
 Color Grade **H**
 Clarity Grade **SI 1**



ADDITIONAL GRADING INFORMATION

Polish **EXCELLENT**
 Symmetry **EXCELLENT**
 Fluorescence **NONE**
 Inscription(s) **IGI LG627475970**
 Comments: This Laboratory Grown Diamond was created by Chemical Vapor Deposition (CVD) growth process and may include post-growth treatment. Type IIa



Sample Image Used



IGI

March 29, 2024
 IGI Report No **LG627475970**
EMERALD CUT
 Carat Weight **2.38 CARATS**
 Color Grade **H**
 Clarity Grade **SI 1**
 Table **65%**
 Girdle **50.5%**
 Slightly Thick
 Long
 Polish **EXCELLENT**
 Symmetry **EXCELLENT**
 Fluorescence **NONE**
 Inscription(s) **IGI LG627475970**

Comments: This Laboratory Grown Diamond was created by Chemical Vapor Deposition (CVD) growth process and may include post-growth treatment. Type IIa