



ELECTRONIC COPY

LG627477781

Report verification at igi.org

LABORATORY GROWN DIAMOND REPORT

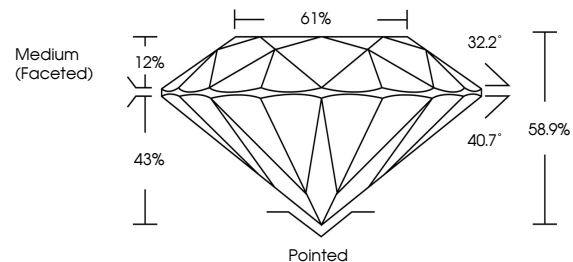
March 29, 2024
 IGI Report Number **LG627477781**
 Description **LABORATORY GROWN
DIAMOND**
 Shape and Cutting Style **ROUND BRILLIANT**
 Measurements **8.16 - 8.23 X 4.83 MM**
GRADING RESULTS
 Carat Weight **2.01 CARATS**
 Color Grade **E**
 Clarity Grade **VS 2**
 Cut Grade **EXCELLENT**

ADDITIONAL GRADING INFORMATION

Polish **EXCELLENT**
 Symmetry **EXCELLENT**
 Fluorescence **NONE**
 Inscription(s) **IGI LG627477781**

Comments: This Laboratory Grown Diamond was created by Chemical Vapor Deposition (CVD) growth process and may include post-growth treatment. Type IIa

PROPORTIONS



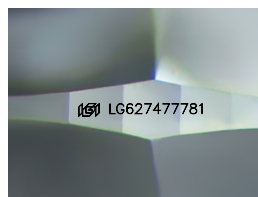
GRADING SCALES

CLARITY

IF	VVS ¹⁻²	VS ¹⁻²	SI ¹⁻²	I ¹⁻³
Internally Flawless	Very Very Slightly Included	Very Slightly Included	Slightly Included	Included

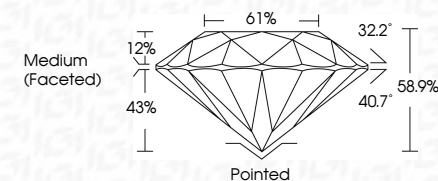
COLOR

D	E	F	G	H	I	J	Faint	Very Light	Light
---	---	---	---	---	---	---	-------	------------	-------



Sample Image Used

March 29, 2024
 IGI Report Number **LG627477781**
 Description **LABORATORY GROWN
DIAMOND**
 Shape and Cutting Style **ROUND BRILLIANT**
 Measurements **8.16 - 8.23 X 4.83 MM**
GRADING RESULTS
 Carat Weight **2.01 CARATS**
 Color Grade **E**
 Clarity Grade **VS 2**
 Cut Grade **EXCELLENT**



ADDITIONAL GRADING INFORMATION

Polish **EXCELLENT**
 Symmetry **EXCELLENT**
 Fluorescence **NONE**
 Inscription(s) **IGI LG627477781**
 Comments: This Laboratory Grown Diamond was created by Chemical Vapor Deposition (CVD) growth process and may include post-growth treatment. Type IIa



IGI



March 29, 2024	IGI Report No LG627477781	ROUND BRILLIANT	8.16 - 8.23 X 4.83 MM	2.01 CARATS	E	VS 2	EXCELLENT	58.9%	61%	Medium (Faceted)	Pointed	EXCELLENT	EXCELLENT	NONE	IGI LG627477781
Color Grade	Clarity Grade	Cut Grade	Depth	Table	Girdle	Culet	Polish	Symmetry	Fluorescence	Inscription(s)	Comments: This Laboratory Grown Diamond was created by Chemical Vapor Deposition (CVD) growth process and may include post-growth treatment. Type IIa				