



ELECTRONIC COPY

LABORATORY GROWN DIAMOND REPORT

April 1, 2024	
IGI Report Number	LG627477925
Description	LABORATORY GROWN DIAMOND
Shape and Cutting Style	ROUND BRILLIANT
Measurements	8.20 - 8.25 X 5.03 MM
GRADING RESULTS	
Carat Weight	2.09 CARATS
Color Grade	E
Clarity Grade	VS 1
Cut Grade	IDEAL

ADDITIONAL GRADING INFORMATION

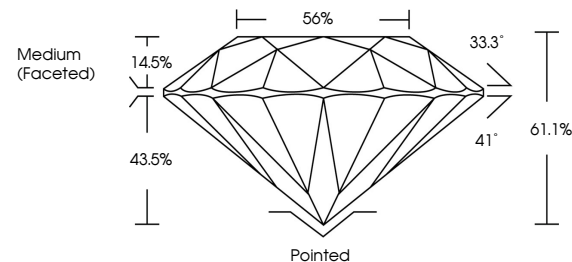
Polish	EXCELLENT
Symmetry	EXCELLENT
Fluorescence	NONE
Inscription(s)	LG627477925

Comments: This Laboratory Grown Diamond was created by Chemical Vapor Deposition (CVD) growth process and may include post-growth treatment.
Type IIa

LABORATORY GROWN DIAMOND REPORT

LG627477925
Report verification at igi.org

PROPORTIONS



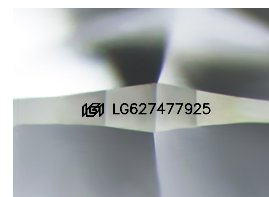
GRADING SCALES

CLARITY

IF	VVS ¹⁻²	VS ¹⁻²	SI ¹⁻²	I ¹⁻³
Internally Flawless	Very Very Slightly Included	Very Slightly Included	Slightly Included	Included

COLOR

D E F G H I J Faint Very Light Light



Sample Image Used



© IGI 2020, International Gemological Institute

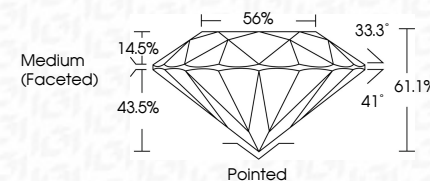
FD - 10 20

www.igi.org

LABORATORY GROWN
DIAMOND REPORT

LABORATORY GROWN DIAMOND REPORT

April 1, 2024	
IGI Report Number	LG627477925
Description	LABORATORY GROWN DIAMOND
Shape and Cutting Style	ROUND BRILLIANT
Measurements	8.20 - 8.25 X 5.03 MM
GRADING RESULTS	
Carat Weight	2.09 CARATS
Color Grade	E
Clarity Grade	VS 1
Cut Grade	IDEAL



ADDITIONAL GRADING INFORMATION

Polish	EXCELLENT
Symmetry	EXCELLENT
Fluorescence	NONE
Inscription(s)	(16) LG627477925

Comments: This Laboratory Grown Diamond was created by Chemical Vapor Deposition (CVD) growth process and may include post-growth treatment.
Type IIa



IG

April 1, 2024
GI Report No LG627477925
ROUND BRILLIANT

3.20 - 8.25 X 5.03 MM

0.20 - 0.25 X 0.05 Mill	2.09 CARATS	F
Carat Weight		
Color Grade		

Color Grade	VS 1
Clarity Grade	

Cut Grade	IDEAL
Depth	61.1%

	56%
Table	
Girdle	Medium (Faceted)

Culet	Pointed
-------	---------

Current		Polished
Polish		EXCELLENT
Symmetry		EXCELLENT

Fluorescence	NONE
Subscription(s)	1681 G-627477925
Excellency	EXCELLENT

Comments:

This Laboratory Grown Diamond was created by Chemical Vapor Deposition (CVD) growth process and may include

(CVD) growth process and may include post-growth treatment.