



ELECTRONIC COPY

LG627494980

Report verification at igi.org

LABORATORY GROWN DIAMOND REPORT

March 28, 2024
 IGI Report Number **LG627494980**
 Description **LABORATORY GROWN
DIAMOND**
 Shape and Cutting Style **PRINCESS CUT**
 Measurements **7.40 X 7.23 X 5.23 MM**

GRADING RESULTS

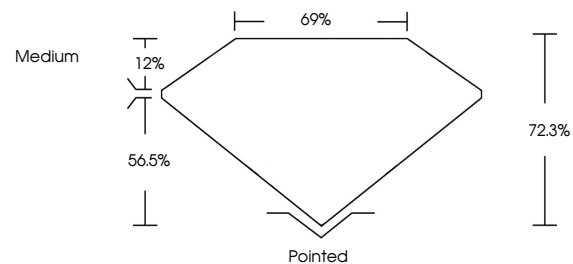
Carat Weight **2.45 CARATS**
 Color Grade **F**
 Clarity Grade **VS 1**

ADDITIONAL GRADING INFORMATION

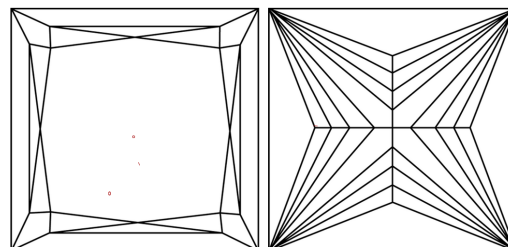
Polish **EXCELLENT**
 Symmetry **EXCELLENT**
 Fluorescence **NONE**
 Inscription(s) **IGI LG627494980**

Comments: This Laboratory Grown Diamond was created by Chemical Vapor Deposition (CVD) growth process and may include post-growth treatment. Type IIa

PROPORTIONS



CLARITY CHARACTERISTICS



KEY TO SYMBOLS

Red symbols indicate internal characteristics.
 Green symbols indicate external characteristics.

GRADING SCALES

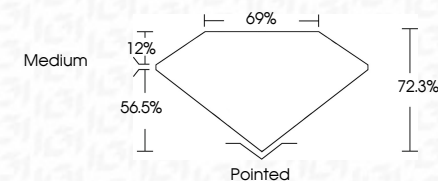
CLARITY

IF	VVS ¹⁻²	VS ¹⁻²	SI ¹⁻²	I ¹⁻³
Internally Flawless	Very Very Slightly Included	Very Slightly Included	Slightly Included	Included

COLOR

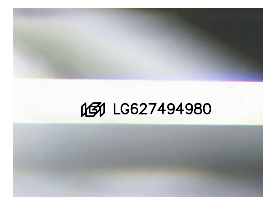
D	E	F	G	H	I	J	Faint	Very Light	Light
---	---	---	---	---	---	---	-------	------------	-------

March 28, 2024
 IGI Report Number **LG627494980**
 Description **LABORATORY GROWN
DIAMOND**
 Shape and Cutting Style **PRINCESS CUT**
 Measurements **7.40 X 7.23 X 5.23 MM**
GRADING RESULTS
 Carat Weight **2.45 CARATS**
 Color Grade **F**
 Clarity Grade **VS 1**



ADDITIONAL GRADING INFORMATION

Polish **EXCELLENT**
 Symmetry **EXCELLENT**
 Fluorescence **NONE**
 Inscription(s) **IGI LG627494980**
 Comments: This Laboratory Grown Diamond was created by Chemical Vapor Deposition (CVD) growth process and may include post-growth treatment. Type IIa



Sample Image Used



IGI

March 28, 2024
 IGI Report No **LG627494980**
PRINCESS CUT
7.40 X 7.23 X 5.23 MM
 Carat Weight **2.45 CARATS**
 Color Grade **F**
 Clarity Grade **VS 1**
 Depth **56.5%**
 Table **12%**
 Girdle **69%**
 Medium
 Pointed
 Polish **EXCELLENT**
 Symmetry **EXCELLENT**
 Fluorescence **NONE**
 Inscription(s) **IGI LG627494980**

Comments: This Laboratory Grown Diamond was created by Chemical Vapor Deposition (CVD) growth process and may include post-growth treatment. Type IIa