



ELECTRONIC COPY

LABORATORY GROWN DIAMOND REPORT

| | |
|-------------------------|-----------------------------|
| March 30, 2024 | |
| IGI Report Number | LG627497204 |
| Description | LABORATORY GROWN DIAMOND |
| Shape and Cutting Style | ROUND BRILLIANT |
| Measurements | 6.44 - 6.47 X 4.01 MM |
| GRADING RESULTS | |
| Carat Weight | 1.03 CARAT |
| Color Grade | D |
| Clarity Grade | VS 2 |
| Cut Grade | IDEAL |

ADDITIONAL GRADING INFORMATION

| | |
|----------------|----------------|
| Polish | EXCELLENT |
| Symmetry | EXCELLENT |
| Fluorescence | NONE |
| Inscription(s) | 15 LG627497204 |

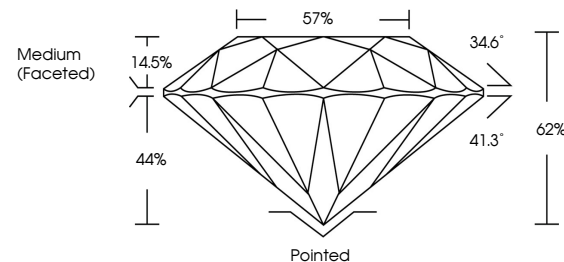
Comments: This Laboratory Grown Diamond was created by Chemical Vapor Deposition (CVD) growth process and may include post-growth treatment.
Type IIa

LABORATORY GROWN DIAMOND REPORT

LG627497204

Report verification at igi.org

PROPORTIONS



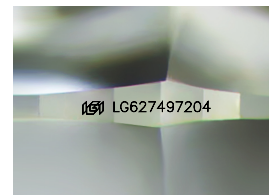
GRADING SCALES

CLARITY

| IF | VVS ¹⁻² | VS ¹⁻² | SI ¹⁻² | I ¹⁻³ |
|------------------------|--------------------------------|---------------------------|----------------------|------------------|
| Internally Flawless | Very Very Slightly Included | Very Slightly Included | Slightly Included | Included |

COLOR

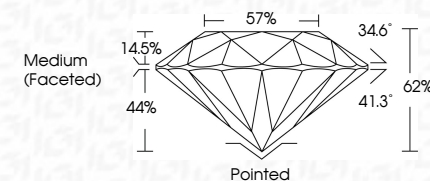
D E F G H I J Faint Very Light Light



Sample Image Used

LABORATORY GROWN DIAMOND REPORT

| | |
|-------------------------|-----------------------------|
| March 30, 2024 | |
| IGI Report Number | LG627497204 |
| Description | LABORATORY GROWN DIAMOND |
| Shape and Cutting Style | ROUND BRILLIANT |
| Measurements | 6.44 - 6.47 X 4.01 MM |
| GRADING RESULTS | |
| Carat Weight | 1.03 CARAT |
| Color Grade | D |
| Clarity Grade | VS 2 |
| Cut Grade | IDEAL |



ADDITIONAL GRADING INFORMATION

| | |
|----------------|--|
| Polish | EXCELLENT |
| Symmetry | EXCELLENT |
| Fluorescence | NONE |
| Inscription(s) |  LG-627497204 |

Comments: This Laboratory Grown Diamond was created by Chemical Vapor Deposition (CVD) growth process and may include post-growth treatment.
Type IIa



IG



© IGI 2020, International Gemological Institute

FD - 10 20

www.igi.org

THIS DOCUMENT WAS PRODUCED WITH THE FOLLOWING SECURITY MEASURES: SPECIAL DOCUMENT PAPER, INK SCREENS, WATERMARK BACKGROUND DESIGNS, HOLOGRAM AND OTHER SECURITY FEATURES NOT LISTED AND DO EXCEED DOCUMENT SECURITY INDUSTRY GUIDELINES

March 30, 2024
GI Report No LG627497204
ROUND BRILLIANT

| | |
|---------------|------------------|
| Carat Weight | 1.08 CARAT |
| Color Grade | D |
| Clarity Grade | VS2 |
| Cut Grade | IDP&L |
| Depth | 62% |
| Table | 57% |
| Grade | Medium (Faceted) |
| Culet | Pointed |
| Polish | EXCELLENT |
| Symmetry | EXCELLENT |
| Fluorescence | NONE |
| Comments | gem 1627702204 |

Comments:
This Laboratory Grown Diamond was created by Chemical Vapor Deposition (CVD) growth process and may include post-growth treatment.