



**INTERNATIONAL  
GEMOLOGICAL  
INSTITUTE**

**ELECTRONIC COPY**

**LABORATORY GROWN  
DIAMOND REPORT**

**LG628400186**

**IGI LABORATORY GROWN  
DIAMOND ID REPORT**

April 3, 2024

IGI Report Number **LG628400186**

**CUT CORNERED RECTANGULAR  
MODIFIED BRILLIANT  
6.32 X 4.20 X 2.77 MM**

Carat Weight 0.64 CARAT  
Color Grade F  
Clarity Grade VVS 2  
Polish VERY GOOD  
Symmetry VERY GOOD  
Fluorescence NONE  
Inscription(s) LG628400186

Comments: This Laboratory Grown Diamond was created by Chemical Vapor Deposition (CVD) growth process and may include post-growth treatment. Type Ila

**LABORATORY GROWN DIAMOND REPORT**

**IGI LABORATORY GROWN DIAMOND IDENTIFICATION REPORT**

April 3, 2024

IGI Report Number **LG628400186**

Description **LABORATORY GROWN DIAMOND**

Shape and Cutting Style **CUT CORNERED RECTANGULAR MODIFIED  
BRILLIANT**

Measurements **6.32 X 4.20 X 2.77 MM**

**GRADING RESULTS**

Carat Weight 0.64 CARAT

Color Grade F

Clarity Grade VVS 2

**ADDITIONAL GRADING INFORMATION**

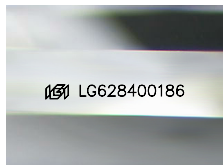
Polish VERY GOOD

Symmetry VERY GOOD

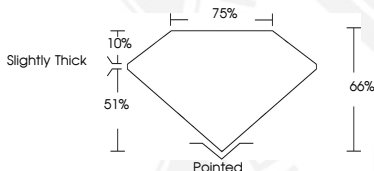
Fluorescence NONE

Inscription(s) LG628400186

Comments: This Laboratory Grown Diamond was created by Chemical Vapor Deposition (CVD) growth process and may include post-growth treatment. Type Ila



Sample Image Used



**IGI LABORATORY GROWN  
DIAMOND ID REPORT**

April 3, 2024

IGI Report Number **LG628400186**

**CUT CORNERED RECTANGULAR  
MODIFIED BRILLIANT  
6.32 X 4.20 X 2.77 MM**

Carat Weight 0.64 CARAT  
Color Grade F  
Clarity Grade VVS 2  
Polish VERY GOOD  
Symmetry VERY GOOD  
Fluorescence NONE  
Inscription(s) LG628400186

Comments: This Laboratory Grown Diamond was created by Chemical Vapor Deposition (CVD) growth process and may include post-growth treatment. Type Ila



THIS DOCUMENT WAS PRODUCED WITH THE FOLLOWING SECURITY MEASURES: SPECIAL DOCUMENT PAPER, INK SCREENS, WATERMARK, BACKGROUND DESIGN, HOLOGRAM AND OTHER SECURITY FEATURES NOT LISTED AND DO EXCEED DOCUMENT SECURITY INDUSTRY GUIDELINES.

For terms & conditions and to verify this report, please visit [www.igi.org](http://www.igi.org)