



ELECTRONIC COPY

LABORATORY GROWN DIAMOND REPORT

LG628406345

Report verification at igi.org

**LABORATORY GROWN
DIAMOND REPORT**

LABORATORY GROWN DIAMOND REPORT

LABORATORY GROWN DIAMOND REPORT

April 10, 2024
 IGI Report Number **LG628406345**
 Description **LABORATORY GROWN
DIAMOND**
 Shape and Cutting Style **CUT CORNERED RECTANGULAR
MODIFIED BRILLIANT**
 Measurements **13.92 X 9.18 X 6.08 MM**

GRADING RESULTS

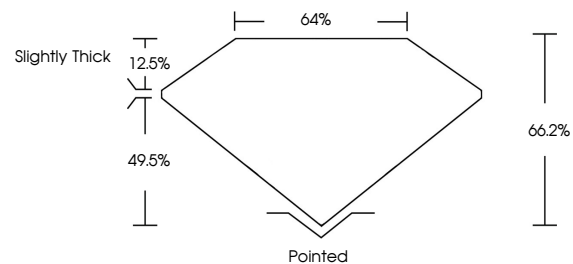
Carat Weight **7.20 CARATS**
 Color Grade **FANCY INTENSE PINK**
 Clarity Grade **VS 1**

ADDITIONAL GRADING INFORMATION

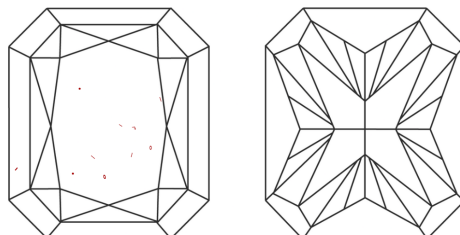
Polish **EXCELLENT**
 Symmetry **EXCELLENT**
 Fluorescence **SLIGHT**
 Inscription(s) **IGI LG628406345**

Comments: This Laboratory Grown Diamond was created by Chemical Vapor Deposition (CVD) growth process.
 Indications of post-growth treatment.

PROPORTIONS



CLARITY CHARACTERISTICS



KEY TO SYMBOLS

Red symbols indicate internal characteristics.
 Green symbols indicate external characteristics.

GRADING SCALES

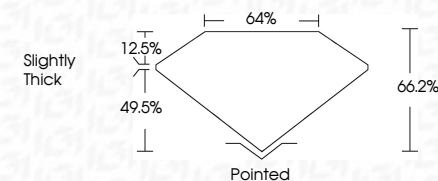
CLARITY

IF	VVS ¹⁻²	VS ¹⁻²	SI ¹⁻²	I ¹⁻³
Internally Flawless	Very Very Slightly Included	Very Slightly Included	Slightly Included	Included

COLOR

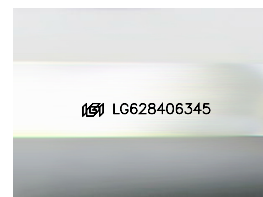
D	E	F	G	H	I	J	Faint	Very Light	Light
Light Tint	Fancy Light	Fancy	Fancy Intense	Fancy Vivid					

April 10, 2024
 IGI Report Number **LG628406345**
 Description **LABORATORY GROWN
DIAMOND**
 Shape and Cutting Style **CUT CORNERED
RECTANGULAR MODIFIED
BRILLIANT**
 Measurements **13.92 X 9.18 X 6.08 MM**
GRADING RESULTS
 Carat Weight **7.20 CARATS**
 Color Grade **FANCY INTENSE PINK**
 Clarity Grade **VS 1**



ADDITIONAL GRADING INFORMATION

Polish **EXCELLENT**
 Symmetry **EXCELLENT**
 Fluorescence **SLIGHT**
 Inscription(s) **IGI LG628406345**
 Comments: This Laboratory Grown Diamond was created by Chemical Vapor Deposition (CVD) growth process.
 Indications of post-growth treatment.



Sample Image Used



IGI

April 10, 2024
 IGI Report No. **LG628406345**
CUT CORNERED RECT. MODIFIED BRILLIANT
13.92 X 9.18 X 6.08 MM
 Carat Weight **7.20 CARATS**
 Color Grade **FANCY INTENSE PINK**
 Clarity Grade **VS 1**
 Depth **66.2%**
 Table **64%**
 Girdle **Slightly Thick**
 Culet **Pointed**
 Polish **EXCELLENT**
 Symmetry **EXCELLENT**
 Fluorescence **SLIGHT**
 Inscription(s) **IGI LG628406345**

Comments: This Laboratory Grown Diamond was created by Chemical Vapor Deposition (CVD) growth process.
 Indications of post-growth treatment.