



**ELECTRONIC COPY**

**LABORATORY GROWN DIAMOND REPORT**

LG628409137

Report verification at [igi.org](http://igi.org)

**LABORATORY GROWN  
DIAMOND REPORT**

**LABORATORY GROWN DIAMOND REPORT**

**LABORATORY GROWN DIAMOND REPORT**

April 6, 2024  
IGI Report Number **LG628409137**  
Description **LABORATORY GROWN  
DIAMOND**  
Shape and Cutting Style **ROUND BRILLIANT**  
Measurements **6.81 - 6.87 X 4.24 MM**

**GRADING RESULTS**

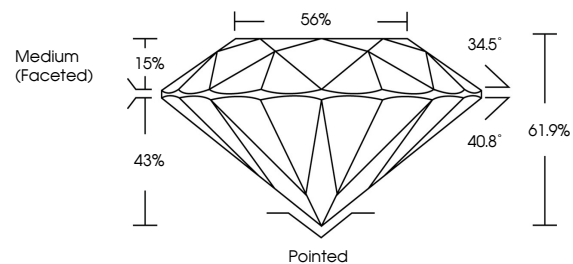
Carat Weight **1.22 CARAT**  
Color Grade **D**  
Clarity Grade **VVS 2**  
Cut Grade **IDEAL**

**ADDITIONAL GRADING INFORMATION**

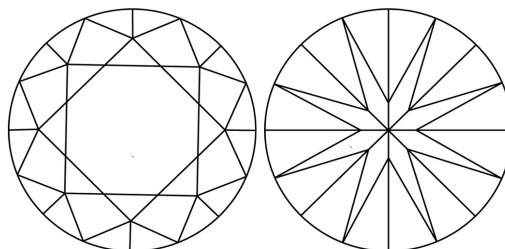
Polish **EXCELLENT**  
Symmetry **EXCELLENT**  
Fluorescence **NONE**  
Inscription(s) **IGI LG628409137**

Comments: As Grown - No indication of post-growth treatment.  
This Laboratory Grown Diamond was created by High Pressure High Temperature (HPHT) growth process.  
Type II

**PROPORTIONS**



**CLARITY CHARACTERISTICS**



**KEY TO SYMBOLS**

Red symbols indicate internal characteristics.  
Green symbols indicate external characteristics.

**GRADING SCALES**

**CLARITY**

| IF                  | VVS <sup>1-2</sup>          | VS <sup>1-2</sup>      | SI <sup>1-2</sup> | I <sup>1-3</sup> |
|---------------------|-----------------------------|------------------------|-------------------|------------------|
| Internally Flawless | Very Very Slightly Included | Very Slightly Included | Slightly Included | Included         |

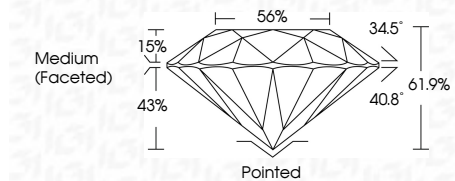
**COLOR**

| D | E | F | G | H | I | J | Faint | Very Light | Light |
|---|---|---|---|---|---|---|-------|------------|-------|
|---|---|---|---|---|---|---|-------|------------|-------|

April 6, 2024  
IGI Report Number **LG628409137**  
Description **LABORATORY GROWN  
DIAMOND**  
Shape and Cutting Style **ROUND BRILLIANT**  
Measurements **6.81 - 6.87 X 4.24 MM**

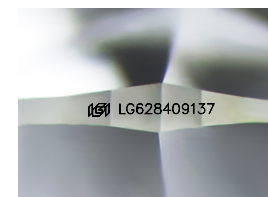
**GRADING RESULTS**

Carat Weight **1.22 CARAT**  
Color Grade **D**  
Clarity Grade **VVS 2**  
Cut Grade **IDEAL**



**ADDITIONAL GRADING INFORMATION**

Polish **EXCELLENT**  
Symmetry **EXCELLENT**  
Fluorescence **NONE**  
Inscription(s) **IGI LG628409137**  
Comments: As Grown - No indication of post-growth treatment.  
This Laboratory Grown Diamond was created by High Pressure High Temperature (HPHT) growth process.  
Type II



Sample Image Used



|                 |                           |              |             |               |           |       |       |                  |         |           |           |              |                 |
|-----------------|---------------------------|--------------|-------------|---------------|-----------|-------|-------|------------------|---------|-----------|-----------|--------------|-----------------|
| April 6, 2024   | IGI Report No LG628409137 | 1.22 CARAT   | D           | VVS 2         | IDEAL     | 61.9% | 56%   | Medium (Faceted) | Pointed | EXCELLENT | EXCELLENT | NONE         | IGI LG628409137 |
| ROUND BRILLIANT | 6.81 - 6.87 X 4.24 MM     | Carat Weight | Color Grade | Clarity Grade | Cut Grade | Depth | Table | Girdle           | Culet   | Polish    | Symmetry  | Fluorescence | Inscription(s)  |



**IGI**

Comments: As Grown - No indication of post-growth treatment.  
This Laboratory Grown Diamond was created by High Pressure High Temperature (HPHT) growth process.  
Type II