



ELECTRONIC COPY

LG628419382

Report verification at igi.org

LABORATORY GROWN DIAMOND REPORT

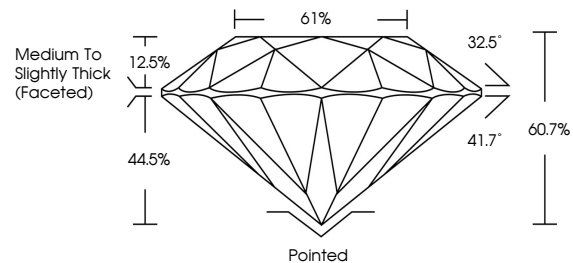
April 5, 2024
 IGI Report Number **LG628419382**
 Description **LABORATORY GROWN
DIAMOND**
 Shape and Cutting Style **ROUND BRILLIANT**
 Measurements **8.21 - 8.28 X 5.00 MM**
GRADING RESULTS
 Carat Weight **2.08 CARATS**
 Color Grade **F**
 Clarity Grade **VS 2**
 Cut Grade **EXCELLENT**

ADDITIONAL GRADING INFORMATION

Polish **EXCELLENT**
 Symmetry **EXCELLENT**
 Fluorescence **NONE**
 Inscription(s) **LG628419382**

Comments: This Laboratory Grown Diamond was created by Chemical Vapor Deposition (CVD) growth process and may include post-growth treatment. Type IIa

PROPORTIONS



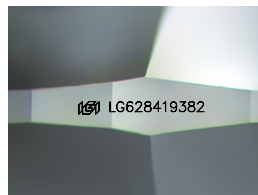
GRADING SCALES

CLARITY

IF	VVS ¹⁻²	VS ¹⁻²	SI ¹⁻²	I ¹⁻³
Internally Flawless	Very Very Slightly Included	Very Slightly Included	Slightly Included	Included

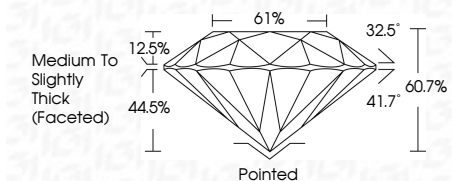
COLOR

D	E	F	G	H	I	J	Faint	Very Light	Light
---	---	---	---	---	---	---	-------	------------	-------



Sample Image Used

April 5, 2024
 IGI Report Number **LG628419382**
 Description **LABORATORY GROWN
DIAMOND**
 Shape and Cutting Style **ROUND BRILLIANT**
 Measurements **8.21 - 8.28 X 5.00 MM**
GRADING RESULTS
 Carat Weight **2.08 CARATS**
 Color Grade **F**
 Clarity Grade **VS 2**
 Cut Grade **EXCELLENT**



ADDITIONAL GRADING INFORMATION

Polish **EXCELLENT**
 Symmetry **EXCELLENT**
 Fluorescence **NONE**
 Inscription(s) **LG628419382**
 Comments: This Laboratory Grown Diamond was created by Chemical Vapor Deposition (CVD) growth process and may include post-growth treatment. Type IIa



IGI



April 5, 2024
 IGI Report No LG628419382
ROUND BRILLIANT
 8.21 - 8.28 X 5.00 MM
 Carat Weight **2.08 CARATS**
 Color Grade **F**
 Clarity Grade **VS 2**
 Cut Grade **EXCELLENT**
 Depth **60.7%**
 Table **12.5%**
 Girdle **Medium To Slightly Thick (Faceted)**
 Pavilion Angle **41.7°**
 Crown Angle **32.5°**
 Culet **Pointed**
 Polish **EXCELLENT**
 Symmetry **EXCELLENT**
 Fluorescence **NONE**
 Inscription(s) **LG628419382**
 Comments: This Laboratory Grown Diamond was created by Chemical Vapor Deposition (CVD) growth process and may include post-growth treatment. Type IIa