



ELECTRONIC COPY

LG628419547

Report verification at igi.org

LABORATORY GROWN DIAMOND REPORT

April 5, 2024
 IGI Report Number **LG628419547**
 Description **LABORATORY GROWN
DIAMOND**
 Shape and Cutting Style **ROUND BRILLIANT**
 Measurements **10.12 - 10.18 X 6.28 MM**

GRADING RESULTS

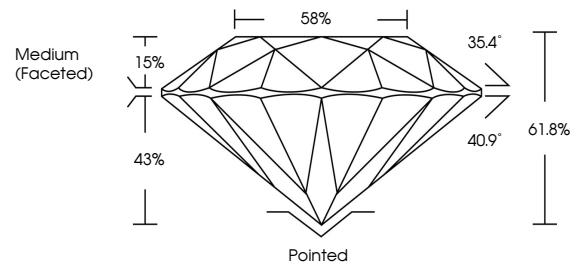
Carat Weight **4.00 CARATS**
 Color Grade **F**
 Clarity Grade **VS 2**
 Cut Grade **IDEAL**

ADDITIONAL GRADING INFORMATION

Polish **EXCELLENT**
 Symmetry **EXCELLENT**
 Fluorescence **NONE**
 Inscription(s) **IGI LG628419547**

Comments: This Laboratory Grown Diamond was created by Chemical Vapor Deposition (CVD) growth process and may include post-growth treatment. Type IIa

PROPORTIONS



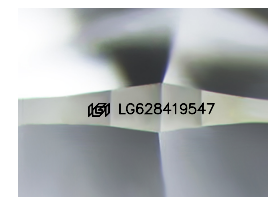
GRADING SCALES

CLARITY

IF	VVS ¹⁻²	VS ¹⁻²	SI ¹⁻²	I ¹⁻³
Internally Flawless	Very Very Slightly Included	Very Slightly Included	Slightly Included	Included

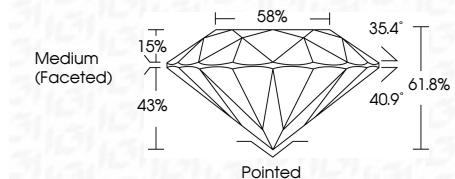
COLOR

D	E	F	G	H	I	J	Faint	Very Light	Light
---	---	---	---	---	---	---	-------	------------	-------



Sample Image Used

April 5, 2024
 IGI Report Number **LG628419547**
 Description **LABORATORY GROWN
DIAMOND**
 Shape and Cutting Style **ROUND BRILLIANT**
 Measurements **10.12 - 10.18 X 6.28 MM**
GRADING RESULTS
 Carat Weight **4.00 CARATS**
 Color Grade **F**
 Clarity Grade **VS 2**
 Cut Grade **IDEAL**



ADDITIONAL GRADING INFORMATION

Polish **EXCELLENT**
 Symmetry **EXCELLENT**
 Fluorescence **NONE**
 Inscription(s) **IGI LG628419547**
 Comments: This Laboratory Grown Diamond was created by Chemical Vapor Deposition (CVD) growth process and may include post-growth treatment. Type IIa



IGI

April 5, 2024
 IGI Report No LG628419547
ROUND BRILLIANT
 10.12 - 10.18 X 6.28 MM
4.00 CARATS
 Carat Weight **F**
 Color Grade **VS 2**
 Clarity Grade **IDEAL**
 Depth **61.8%**
 Table **15%**
 Girdle **Medium (Faceted)**
 Pavilion Angle **40.9°**
 Crown Angle **35.4°**
 Cut **Pointed**
 Polish **EXCELLENT**
 Symmetry **EXCELLENT**
 Fluorescence **NONE**
 Inscription(s) **IGI LG628419547**
 Comments: This Laboratory Grown Diamond was created by Chemical Vapor Deposition (CVD) growth process and may include post-growth treatment. Type IIa