



ELECTRONIC COPY

LABORATORY GROWN DIAMOND REPORT

LG628422711

Report verification at igi.org

LABORATORY GROWN DIAMOND REPORT

LABORATORY GROWN DIAMOND REPORT

LABORATORY GROWN DIAMOND REPORT

April 11, 2024
IGI Report Number LG628422711
Description LABORATORY GROWN DIAMOND
Shape and Cutting Style ROUND BRILLIANT
Measurements 9.28 - 9.34 X 5.66 MM

GRADING RESULTS

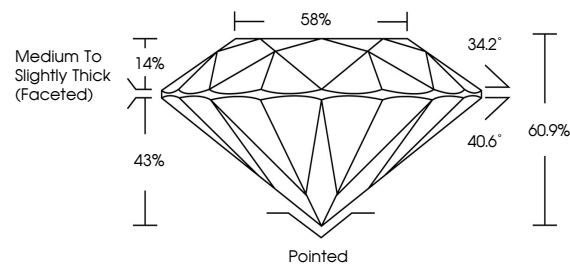
Carat Weight 3.03 CARATS
Color Grade F
Clarity Grade VS 1
Cut Grade IDEAL

ADDITIONAL GRADING INFORMATION

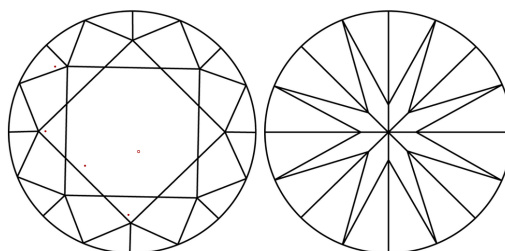
Polish EXCELLENT
Symmetry EXCELLENT
Fluorescence NONE
Inscription(s) IGI LG628422711

Comments: This Laboratory Grown Diamond was created by Chemical Vapor Deposition (CVD) growth process and may include post-growth treatment. Type IIa

PROPORTIONS



CLARITY CHARACTERISTICS



KEY TO SYMBOLS

Red symbols indicate internal characteristics.
Green symbols indicate external characteristics.

GRADING SCALES

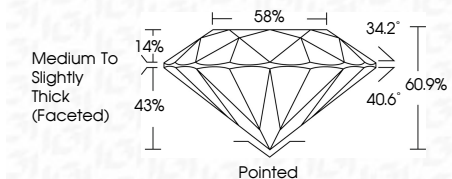
CLARITY

Table with columns: IF, VVS 1-2, VS 1-2, SI 1-2, I 1-3. Rows: Internally Flawless, Very Very Slightly Included, Very Slightly Included, Slightly Included, Included.

COLOR

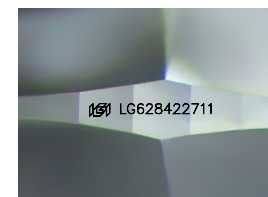
Table with columns: D, E, F, G, H, I, J, Faint, Very Light, Light.

April 11, 2024
IGI Report Number LG628422711
Description LABORATORY GROWN DIAMOND
Shape and Cutting Style ROUND BRILLIANT
Measurements 9.28 - 9.34 X 5.66 MM
GRADING RESULTS
Carat Weight 3.03 CARATS
Color Grade F
Clarity Grade VS 1
Cut Grade IDEAL



ADDITIONAL GRADING INFORMATION

Polish EXCELLENT
Symmetry EXCELLENT
Fluorescence NONE
Inscription(s) IGI LG628422711
Comments: This Laboratory Grown Diamond was created by Chemical Vapor Deposition (CVD) growth process and may include post-growth treatment. Type IIa



Sample Image Used



IGI

April 11, 2024
IGI Report No LG628422711
ROUND BRILLIANT
3.03 CARATS F
Color Grade VS 1 IDEAL
Clarity Grade VS 1 IDEAL
Depth 60.9%
Table 58%
Girdle Medium To Slightly Thick (Faceted)
Culet Pointed
Polish EXCELLENT
Symmetry EXCELLENT
Fluorescence NONE
Inscriptions(s) IGI LG628422711
Comments: This Laboratory Grown Diamond was created by Chemical Vapor Deposition (CVD) growth process and may include post-growth treatment. Type IIa