



**INTERNATIONAL  
GEMOLOGICAL  
INSTITUTE**

**ELECTRONIC COPY**

**LABORATORY GROWN  
DIAMOND REPORT**

**LG628424291**

**IGI LABORATORY GROWN  
DIAMOND ID REPORT**

April 8, 2024

IGI Report Number **LG628424291**

**SQUARE CUSHION BRILLIANT**

**5.64 X 5.55 X 3.71 MM**

Carat Weight	0.91 CARAT
Color Grade	D
Clarity Grade	VVS 2
Polish	EXCELLENT
Symmetry	EXCELLENT
Fluorescence	NONE
Inscription(s)	LG628424291

Comments: As Grown - No indication of post-growth treatment. This Laboratory Grown Diamond was created by High Pressure High Temperature (HPHT) growth process. Type II

**LABORATORY GROWN DIAMOND REPORT**

**IGI LABORATORY GROWN DIAMOND IDENTIFICATION REPORT**

April 8, 2024

IGI Report Number

LG628424291

Description

LABORATORY GROWN DIAMOND

Shape and Cutting Style

SQUARE CUSHION BRILLIANT

Measurements

5.64 X 5.55 X 3.71 MM

**GRADING RESULTS**

Carat Weight

0.91 CARAT

Color Grade

D

Clarity Grade

VVS 2

**ADDITIONAL GRADING INFORMATION**

Polish

EXCELLENT

Symmetry

EXCELLENT

Fluorescence

NONE

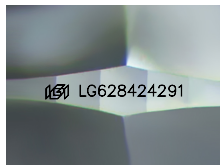
Inscription(s)

LG628424291

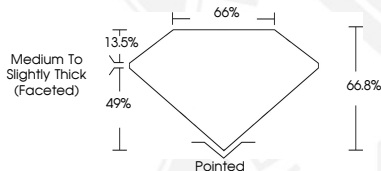
Comments: As Grown - No indication of post-growth treatment.

This Laboratory Grown Diamond was created by High Pressure High Temperature (HPHT) growth process.

Type II



Sample Image Used



**IGI LABORATORY GROWN  
DIAMOND ID REPORT**

April 8, 2024

IGI Report Number **LG628424291**

**SQUARE CUSHION BRILLIANT**

**5.64 X 5.55 X 3.71 MM**

Carat Weight	0.91 CARAT
Color Grade	D
Clarity Grade	VVS 2
Polish	EXCELLENT
Symmetry	EXCELLENT
Fluorescence	NONE
Inscription(s)	LG628424291

Comments: As Grown - No indication of post-growth treatment. This Laboratory Grown Diamond was created by High Pressure High Temperature (HPHT) growth process. Type II

THIS DOCUMENT WAS PRODUCED WITH THE FOLLOWING SECURITY MEASURES: SPECIAL DOCUMENT PAPER, INK SCREENS, WATERMARK, BACKGROUND DESIGN, HOLOGRAM AND OTHER SECURITY FEATURES NOT LISTED AND DO EXCEED DOCUMENT SECURITY INDUSTRY GUIDELINES.

For terms & conditions and to verify this report, please visit [www.igi.org](http://www.igi.org)