



ELECTRONIC COPY

LABORATORY GROWN DIAMOND REPORT

April 10, 2024
 IGI Report Number **LG628425138**
 Description **LABORATORY GROWN
DIAMOND**
 Shape and Cutting Style **ROUND BRILLIANT**
 Measurements **9.29 - 9.31 X 5.76 MM**

GRADING RESULTS

Carat Weight **3.07 CARATS**
 Color Grade **F**
 Clarity Grade **VVS 2**
 Cut Grade **IDEAL**

ADDITIONAL GRADING INFORMATION

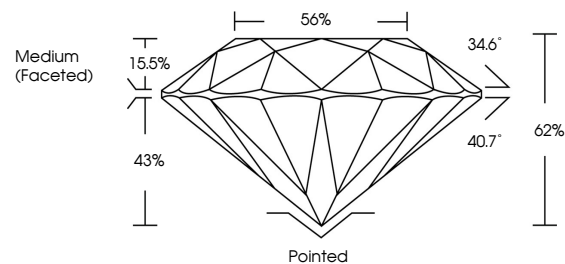
Polish **EXCELLENT**
 Symmetry **EXCELLENT**
 Fluorescence **NONE**
 Inscription(s) **IGI LG628425138**

Comments: This Laboratory Grown Diamond was created by Chemical Vapor Deposition (CVD) growth process and may include post-growth treatment. Type IIa

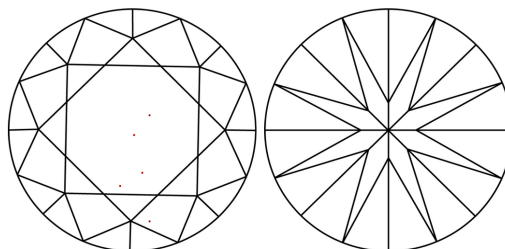
LABORATORY GROWN DIAMOND REPORT

LG628425138
 Report verification at igi.org

PROPORTIONS



CLARITY CHARACTERISTICS



KEY TO SYMBOLS

Red symbols indicate internal characteristics.
 Green symbols indicate external characteristics.

**LABORATORY GROWN
DIAMOND REPORT**

GRADING SCALES

CLARITY

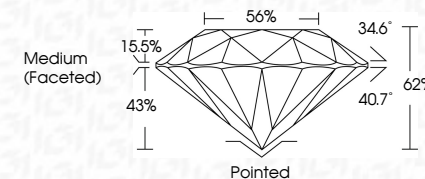
| IF | VVS ¹⁻² | VS ¹⁻² | SI ¹⁻² | I ¹⁻³ |
|------------------------|--------------------------------|---------------------------|----------------------|------------------|
| Internally Flawless | Very Very Slightly Included | Very Slightly Included | Slightly Included | Included |

COLOR

| D | E | F | G | H | I | J | Faint | Very Light | Light |
|---|---|---|---|---|---|---|-------|------------|-------|
|---|---|---|---|---|---|---|-------|------------|-------|

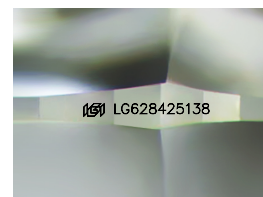
LABORATORY GROWN DIAMOND REPORT

April 10, 2024
 IGI Report Number **LG628425138**
 Description **LABORATORY GROWN
DIAMOND**
 Shape and Cutting Style **ROUND BRILLIANT**
 Measurements **9.29 - 9.31 X 5.76 MM**
GRADING RESULTS
 Carat Weight **3.07 CARATS**
 Color Grade **F**
 Clarity Grade **VVS 2**
 Cut Grade **IDEAL**



ADDITIONAL GRADING INFORMATION

Polish **EXCELLENT**
 Symmetry **EXCELLENT**
 Fluorescence **NONE**
 Inscription(s) **IGI LG628425138**
 Comments: This Laboratory Grown Diamond was created by Chemical Vapor Deposition (CVD) growth process and may include post-growth treatment. Type IIa



Sample Image Used



IGI

| | | | | | | | | | | | | | |
|----------------|---------------------------|---------------|-----------|-------|-------|-----|-------|------------------|----------|--------------|-----------------|---|-----------------|
| April 10, 2024 | IGI Report No LG628425138 | 3.07 CARATS | F | VVS 2 | IDEAL | 62% | 66% | Medium (Faceted) | Pointed | EXCELLENT | EXCELLENT | NONE | IGI LG628425138 |
| Carat Weight | Color Grade | Clarity Grade | Cut Grade | Depth | Table | Gra | Color | Polish | Symmetry | Fluorescence | Inscriptions(s) | Comments: This Laboratory Grown Diamond was created by Chemical Vapor Deposition (CVD) growth process and may include post-growth treatment. Type IIa | |