



**INTERNATIONAL
GEMOLOGICAL
INSTITUTE**

ELECTRONIC COPY

**LABORATORY GROWN
DIAMOND REPORT**

LG628426065

**IGI LABORATORY GROWN
DIAMOND ID REPORT**

April 15, 2024

IGI Report Number **LG628426065**

**CUT CORNERED RECTANGULAR
MODIFIED BRILLIANT**

5.74 X 4.22 X 2.86 MM

Carat Weight 0.65 CARAT
Color Grade FANCY VIVID PINK
Clarity Grade VVS 2
Polish EXCELLENT
Symmetry VERY GOOD
Fluorescence SLIGHT
Inscription(s) IGI LG628426065

Comments: This Laboratory Grown Diamond was created by Chemical Vapor Deposition (CVD) growth process. Indications of post-growth treatment.

LABORATORY GROWN DIAMOND REPORT

IGI LABORATORY GROWN DIAMOND IDENTIFICATION REPORT

April 15, 2024

IGI Report Number LG628426065

Description LABORATORY GROWN DIAMOND

Shape and Cutting Style CUT CORNERED RECTANGULAR MODIFIED BRILLIANT

Measurements 5.74 X 4.22 X 2.86 MM

GRADING RESULTS

Carat Weight 0.65 CARAT

Color Grade FANCY VIVID PINK

Clarity Grade VVS 2

ADDITIONAL GRADING INFORMATION

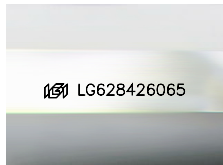
Polish EXCELLENT

Symmetry VERY GOOD

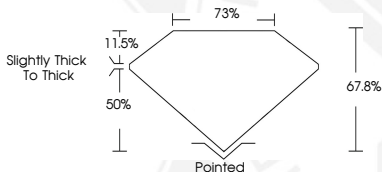
Fluorescence SLIGHT

Inscription(s) IGI LG628426065

Comments: This Laboratory Grown Diamond was created by Chemical Vapor Deposition (CVD) growth process. Indications of post-growth treatment.



Sample Image Used



**IGI LABORATORY GROWN
DIAMOND ID REPORT**

April 15, 2024

IGI Report Number **LG628426065**

**CUT CORNERED RECTANGULAR
MODIFIED BRILLIANT**

5.74 X 4.22 X 2.86 MM

Carat Weight 0.65 CARAT
Color Grade FANCY VIVID PINK
Clarity Grade VVS 2
Polish EXCELLENT
Symmetry VERY GOOD
Fluorescence SLIGHT
Inscription(s) IGI LG628426065

Comments: This Laboratory Grown Diamond was created by Chemical Vapor Deposition (CVD) growth process. Indications of post-growth treatment.



THIS DOCUMENT WAS PRODUCED WITH THE FOLLOWING SECURITY MEASURES: SPECIAL DOCUMENT PAPER, INK SCREENS, WATERMARK, BACKGROUND DESIGN, HOLOGRAM AND OTHER SECURITY FEATURES NOT LISTED AND DO EXCEED DOCUMENT SECURITY INDUSTRY GUIDELINES.

For terms & conditions and to verify this report, please visit www.igi.org