



ELECTRONIC COPY

LG628447671
Report verification at igi.org



July 23, 2024
IGI Report Number: LG628447671
Description: LABORATORY GROWN DIAMOND
Shape and Cutting Style: CUSHION MODIFIED BRILLIANT
Measurements: 8.37 X 6.60 X 4.75 MM
GRADING RESULTS
Carat Weight: 2.01 CARATS
Color Grade: D
Clarity Grade: VVS 1

LABORATORY GROWN DIAMOND REPORT

July 23, 2024
IGI Report Number: LG628447671
Description: LABORATORY GROWN DIAMOND
Shape and Cutting Style: CUSHION MODIFIED BRILLIANT
Measurements: 8.37 X 6.60 X 4.75 MM

GRADING RESULTS

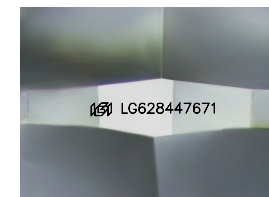
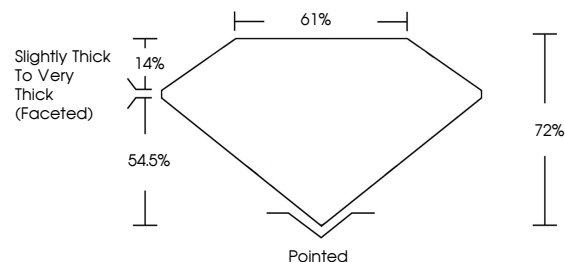
Carat Weight: 2.01 CARATS
Color Grade: D
Clarity Grade: VVS 1

ADDITIONAL GRADING INFORMATION

Polish: EXCELLENT
Symmetry: EXCELLENT
Fluorescence: NONE
Inscription(s): IGI LG628447671

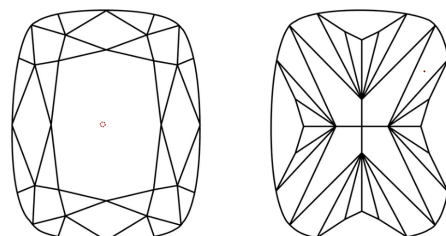
Comments: As Grown - No indication of post-growth treatment.
This Laboratory Grown Diamond was created by High Pressure High Temperature (HPHT) growth process.
Type II

PROPORTIONS



Sample Image Used

CLARITY CHARACTERISTICS



KEY TO SYMBOLS

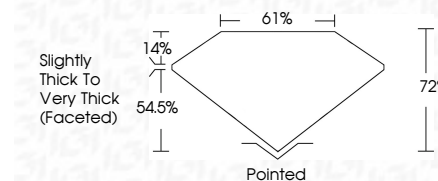
Red symbols indicate internal characteristics.
Green symbols indicate external characteristics.

COLOR

D E F G H I J Faint Very Light Light

CLARITY

IF VS 1-2 VS 1-2 SI 1-2 I 1-3
Internally Flawless Very Very Slightly Included Very Slightly Included Slightly Included Included



ADDITIONAL GRADING INFORMATION

Polish: EXCELLENT
Symmetry: EXCELLENT
Fluorescence: NONE
Inscription(s): IGI LG628447671
Comments: As Grown - No indication of post-growth treatment.
This Laboratory Grown Diamond was created by High Pressure High Temperature (HPHT) growth process.
Type II



July 23, 2024
IGI Report No: LG628447671
CUSHION MODIFIED BRILLIANT
8.37 X 6.60 X 4.75 MM
2.01 CARATS
D
VVS 1
72%
61%
Slightly Thick To Very Thick (Faceted)
Pointed
EXCELLENT
EXCELLENT
NONE
IGI LG628447671
Comments: As Grown - No indication of post-growth treatment.
This Laboratory Grown Diamond was created by High Pressure High Temperature (HPHT) growth process.
Type II