



ELECTRONIC COPY

LG628458915
Report verification at igi.org



July 24, 2024

IGI Report Number **LG628458915**

Description **LABORATORY GROWN DIAMOND**

Shape and Cutting Style **ROUND BRILLIANT**

Measurements **6.56 - 6.58 X 3.96 MM**

GRADING RESULTS

Carat Weight **1.04 CARAT**

Color Grade **FANCY INTENSE ORANGE**

Clarity Grade **VVS 2**

Cut Grade **EXCELLENT**

July 24, 2024
IGI Report Number **LG628458915**
Description **LABORATORY GROWN DIAMOND**
Shape and Cutting Style **ROUND BRILLIANT**
Measurements **6.56 - 6.58 X 3.96 MM**

GRADING RESULTS

Carat Weight **1.04 CARAT**

Color Grade **FANCY INTENSE ORANGE**

Clarity Grade **VVS 2**

Cut Grade **EXCELLENT**

ADDITIONAL GRADING INFORMATION

Polish **EXCELLENT**

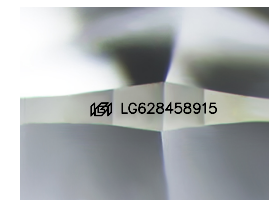
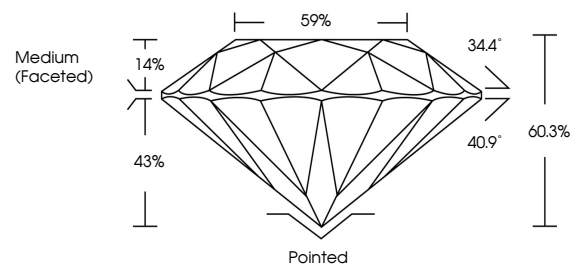
Symmetry **EXCELLENT**

Fluorescence **STRONG**

Inscription(s) **LG628458915**

Comments: Plot not shown.
This Laboratory Grown Diamond was created by
Chemical Vapor Deposition (CVD) growth process.
Type IIa, Indications of post-growth treatment.

PROPORTIONS



Sample Image Used

CLARITY CHARACTERISTICS



KEY TO SYMBOLS

Red symbols indicate internal characteristics.
Green symbols indicate external characteristics.

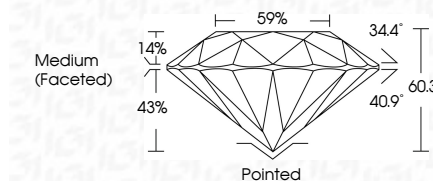
COLOR

D E F G H I J Faint Very Light Light

CLARITY

IF VVS¹⁻² VS¹⁻² SI¹⁻² I¹⁻³

Internally Flawless Very Very Slightly Included Very Slightly Included Slightly Included Included



ADDITIONAL GRADING INFORMATION

Polish **EXCELLENT**

Symmetry **EXCELLENT**

Fluorescence **STRONG**

Inscription(s) **LG628458915**

Comments: Plot not shown.
This Laboratory Grown Diamond was created by
Chemical Vapor Deposition (CVD) growth process.
Type IIa, Indications of post-growth treatment.



IGI



July 24, 2024
IGI Report No **LG628458915**
ROUND BRILLIANT
6.56 - 6.58 X 3.96 MM
Carat Weight **1.04 CARAT**
Color Grade **FANCY INTENSE ORANGE**
Clarity Grade **VVS 2**
Cut Grade **EXCELLENT**
Depth **60.3%**
Table **59%**
Girdle **Medium (Faceted)**
Culet **Pointed**
Polish **EXCELLENT**
Symmetry **EXCELLENT**
Fluorescence **STRONG**
Inscription(s) **LG628458915**
Comments: Plot not shown.
This Laboratory Grown Diamond was created by Chemical Vapor Deposition (CVD) growth process.
Type IIa, Indications of post-growth treatment.