



**ELECTRONIC COPY**

LG628459175  
Report verification at igi.org



July 19, 2024

IGI Report Number **LG628459175**

Description **LABORATORY GROWN DIAMOND**

Shape and Cutting Style **ROUND BRILLIANT**

Measurements **5.79 - 5.83 X 3.49 MM**

**GRADING RESULTS**

Carat Weight **0.70 CARAT**

Color Grade **D**

Clarity Grade **VS 1**

Cut Grade **IDEAL**

July 19, 2024  
IGI Report Number **LG628459175**  
Description **LABORATORY GROWN DIAMOND**  
Shape and Cutting Style **ROUND BRILLIANT**  
Measurements **5.79 - 5.83 X 3.49 MM**

**GRADING RESULTS**

Carat Weight **0.70 CARAT**

Color Grade **D**

Clarity Grade **VS 1**

Cut Grade **IDEAL**

**ADDITIONAL GRADING INFORMATION**

Polish **EXCELLENT**

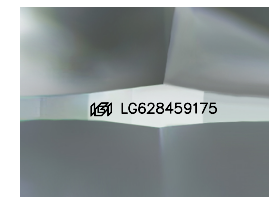
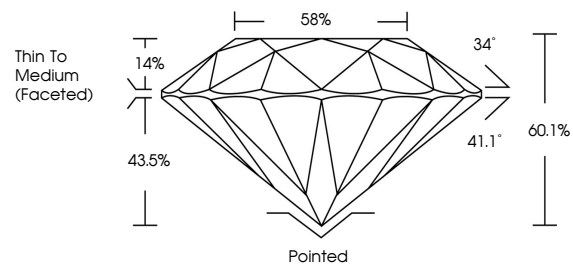
Symmetry **EXCELLENT**

Fluorescence **NONE**

Inscription(s) **IGI LG628459175**

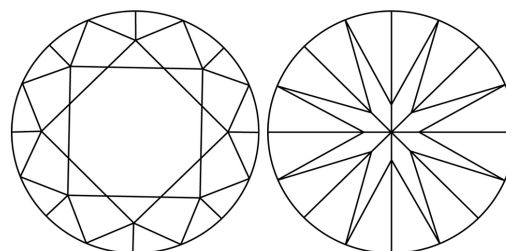
Comments: Plot not shown.  
This Laboratory Grown Diamond was created by  
Chemical Vapor Deposition (CVD) growth process.  
Type IIa

**PROPORTIONS**



Sample Image Used

**CLARITY CHARACTERISTICS**



**KEY TO SYMBOLS**

Red symbols indicate internal characteristics.  
Green symbols indicate external characteristics.

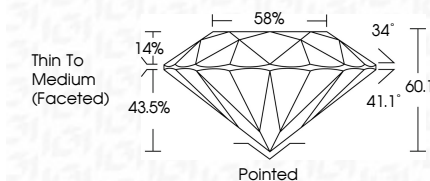
**COLOR**

D E F G H I J Faint Very Light Light

**CLARITY**

IF VS<sup>1-2</sup> VS<sup>1-2</sup> SI<sup>1-2</sup> I<sup>1-3</sup>

Internally Flawless Very Very Slightly Included Very Slightly Included Slightly Included Included



**ADDITIONAL GRADING INFORMATION**

Polish **EXCELLENT**

Symmetry **EXCELLENT**

Fluorescence **NONE**

Inscription(s) **IGI LG628459175**

Comments: Plot not shown.  
This Laboratory Grown Diamond was created by  
Chemical Vapor Deposition (CVD) growth process.  
Type IIa



**IGI**



July 19, 2024	IGI Report No LG628459175	0.70 CARAT	D	VS 1	IDEAL	60.1%	58%	Thin To Medium (Faceted)	Pointed	EXCELLENT	EXCELLENT	NONE	IGI LG628459175
IGI Report No LG628459175	ROUND BRILLIANT	5.79 - 5.83 X 3.49 MM	Color Grade	Clarity Grade	Cut Grade	Depth	Table	Girdle	Culet	Polish	Symmetry	Fluorescence	Inscription(s)

Comments: Plot not shown. This Laboratory Grown Diamond was created by Chemical Vapor Deposition (CVD) growth process. Type IIa