



**ELECTRONIC COPY**

LG628459637  
Report verification at igi.org



July 18, 2024  
IGI Report Number **LG628459637**  
Description **LABORATORY GROWN DIAMOND**  
Shape and Cutting Style **PRINCESS CUT**  
Measurements **6.00 X 6.00 X 4.31 MM**  
**GRADING RESULTS**  
Carat Weight **1.34 CARAT**  
Color Grade **E**  
Clarity Grade **VS 1**  
Cut Grade **EXCELLENT**

**LABORATORY GROWN DIAMOND REPORT**

July 18, 2024  
IGI Report Number **LG628459637**  
Description **LABORATORY GROWN DIAMOND**  
Shape and Cutting Style **PRINCESS CUT**  
Measurements **6.00 X 6.00 X 4.31 MM**

**GRADING RESULTS**

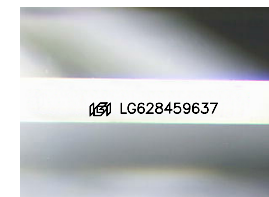
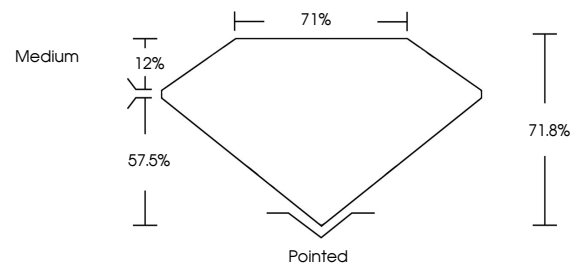
Carat Weight **1.34 CARAT**  
Color Grade **E**  
Clarity Grade **VS 1**  
Cut Grade **EXCELLENT**

**ADDITIONAL GRADING INFORMATION**

Polish **EXCELLENT**  
Symmetry **EXCELLENT**  
Fluorescence **NONE**  
Inscription(s) **LG628459637**

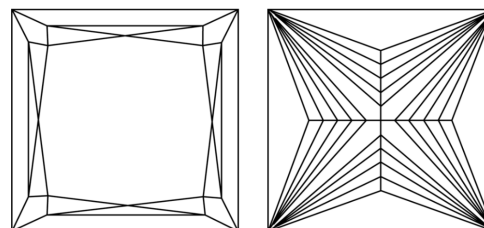
Comments: Plot not shown.  
This Laboratory Grown Diamond was created by  
Chemical Vapor Deposition (CVD) growth process.  
Type IIa

**PROPORTIONS**



Sample Image Used

**CLARITY CHARACTERISTICS**



**KEY TO SYMBOLS**

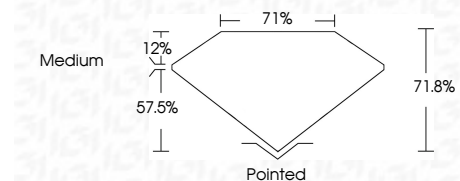
Red symbols indicate internal characteristics.  
Green symbols indicate external characteristics.

**COLOR**

D E F G H I J Faint Very Light Light

**CLARITY**

IF	VS <sup>1-2</sup>	VS <sup>1-2</sup>	SI <sup>1-2</sup>	I <sup>1-3</sup>
Internally Flawless	Very Very Slightly Included	Very Slightly Included	Slightly Included	Included



**ADDITIONAL GRADING INFORMATION**

Polish **EXCELLENT**  
Symmetry **EXCELLENT**  
Fluorescence **NONE**  
Inscription(s) **LG628459637**  
Comments: Plot not shown.  
This Laboratory Grown Diamond was created by  
Chemical Vapor Deposition (CVD) growth process.  
Type IIa



July 18, 2024  
IGI Report No. **LG628459637**  
**PRINCESS CUT**

**6.00 X 6.00 X 4.31 MM**

Carat Weight **1.34 CARAT**  
Color Grade **E**  
Clarity Grade **VS 1**  
Depth **57.5%**  
Table **12%**  
Girdle **71%**  
Culet **Medium**

Polish **EXCELLENT**  
Symmetry **EXCELLENT**  
Fluorescence **NONE**  
Inscriptions(s) **LG628459637**

Comments:  
Plot not shown.  
This Laboratory Grown Diamond was  
created by Chemical Vapor Deposition  
(CVD) growth process.  
Type IIa