



ELECTRONIC COPY

LABORATORY GROWN DIAMOND REPORT

LG628460251

Report verification at igi.org

LABORATORY GROWN DIAMOND REPORT

LABORATORY GROWN DIAMOND REPORT

LABORATORY GROWN DIAMOND REPORT

April 4, 2024
IGI Report Number LG628460251
Description LABORATORY GROWN DIAMOND
Shape and Cutting Style ROUND BRILLIANT
Measurements 9.34 - 9.37 X 5.53 MM

GRADING RESULTS

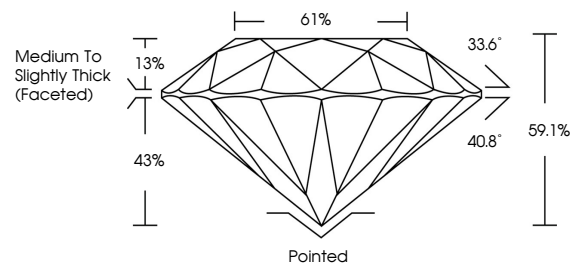
Carat Weight 2.96 CARATS
Color Grade E
Clarity Grade VS 1
Cut Grade EXCELLENT

ADDITIONAL GRADING INFORMATION

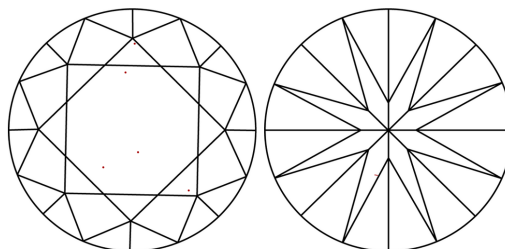
Polish EXCELLENT
Symmetry EXCELLENT
Fluorescence NONE
Inscription(s) IGI LG628460251

Comments: This Laboratory Grown Diamond was created by Chemical Vapor Deposition (CVD) growth process and may include post-growth treatment. Type IIa

PROPORTIONS



CLARITY CHARACTERISTICS



KEY TO SYMBOLS

Red symbols indicate internal characteristics.
Green symbols indicate external characteristics.

GRADING SCALES

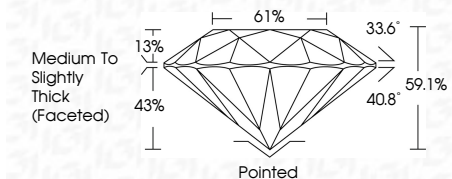
CLARITY

Table mapping clarity grades (IF, VVS, VS, SI, I) to descriptions (Internally Flawless, Very Very Slightly Included, etc.)

COLOR

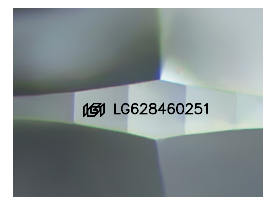
Table mapping color grades (D, E, F, G, H, I, J) to descriptions (Faint, Very Light, Light)

April 4, 2024
IGI Report Number LG628460251
Description LABORATORY GROWN DIAMOND
Shape and Cutting Style ROUND BRILLIANT
Measurements 9.34 - 9.37 X 5.53 MM
GRADING RESULTS
Carat Weight 2.96 CARATS
Color Grade E
Clarity Grade VS 1
Cut Grade EXCELLENT



ADDITIONAL GRADING INFORMATION

Polish EXCELLENT
Symmetry EXCELLENT
Fluorescence NONE
Inscription(s) IGI LG628460251
Comments: This Laboratory Grown Diamond was created by Chemical Vapor Deposition (CVD) growth process and may include post-growth treatment. Type IIa



Sample Image Used



IGI

April 4, 2024
IGI Report No LG628460251
ROUND BRILLIANT
9.34 - 9.37 X 5.53 MM
2.96 CARATS
Color Grade E
Clarity Grade VS 1
Depth 61.1%
Table 61%
Girdle Medium To Slightly Thick (Faceted)
Culet Pointed
Polish EXCELLENT
Symmetry EXCELLENT
Fluorescence NONE
Inscriptions(s) IGI LG628460251
Comments: This Laboratory Grown Diamond was created by Chemical Vapor Deposition (CVD) growth process and may include post-growth treatment. Type IIa