



ELECTRONIC COPY

LABORATORY GROWN DIAMOND REPORT

LG628461543

Report verification at igi.org

**LABORATORY GROWN
DIAMOND REPORT**

LABORATORY GROWN DIAMOND REPORT

LABORATORY GROWN DIAMOND REPORT

April 6, 2024
IGI Report Number **LG628461543**
Description **LABORATORY GROWN
DIAMOND**
Shape and Cutting Style **SQUARE CUSHION BRILLIANT**
Measurements **8.43 X 8.35 X 5.77 MM**

GRADING RESULTS

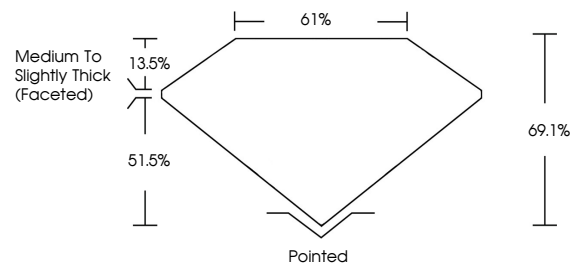
Carat Weight **3.13 CARATS**
Color Grade **D**
Clarity Grade **VS 1**

ADDITIONAL GRADING INFORMATION

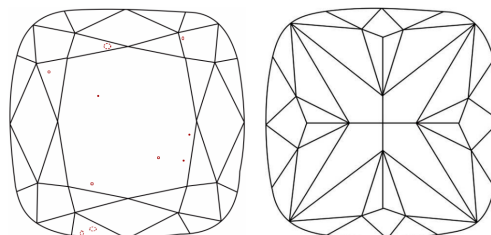
Polish **EXCELLENT**
Symmetry **EXCELLENT**
Fluorescence **NONE**
Inscription(s) **IGI LG628461543**

Comments: This Laboratory Grown Diamond was created by Chemical Vapor Deposition (CVD) growth process and may include post-growth treatment. Type IIa

PROPORTIONS



CLARITY CHARACTERISTICS



KEY TO SYMBOLS

Red symbols indicate internal characteristics.
Green symbols indicate external characteristics.

GRADING SCALES

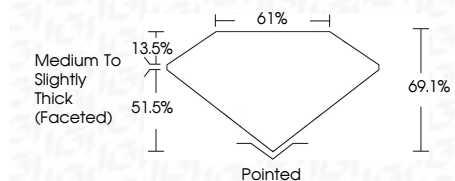
CLARITY

IF	VVS ¹⁻²	VS ¹⁻²	SI ¹⁻²	I ¹⁻³
Internally Flawless	Very Very Slightly Included	Very Slightly Included	Slightly Included	Included

COLOR

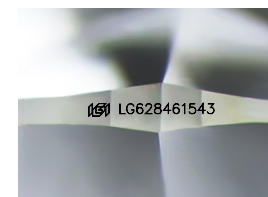
D	E	F	G	H	I	J	Faint	Very Light	Light
---	---	---	---	---	---	---	-------	------------	-------

April 6, 2024
IGI Report Number **LG628461543**
Description **LABORATORY GROWN
DIAMOND**
Shape and Cutting Style **SQUARE CUSHION BRILLIANT**
Measurements **8.43 X 8.35 X 5.77 MM**
GRADING RESULTS
Carat Weight **3.13 CARATS**
Color Grade **D**
Clarity Grade **VS 1**



ADDITIONAL GRADING INFORMATION

Polish **EXCELLENT**
Symmetry **EXCELLENT**
Fluorescence **NONE**
Inscription(s) **IGI LG628461543**
Comments: This Laboratory Grown Diamond was created by Chemical Vapor Deposition (CVD) growth process and may include post-growth treatment. Type IIa



Sample Image Used



IGI

April 6, 2024
IGI Report No LG628461543
SQUARE CUSHION BRILLIANT
8.43 X 8.35 X 5.77 MM
3.13 CARATS
D
3.13 CARATS
D
VS 1
61%
61%
Medium to Slightly Thick (Faceted)
Pointed
EXCELLENT
EXCELLENT
NONE
IGI LG628461543

Comments: This Laboratory Grown Diamond was created by Chemical Vapor Deposition (CVD) growth process and may include post-growth treatment. Type IIa