



**INTERNATIONAL  
GEMOLOGICAL  
INSTITUTE**

**ELECTRONIC COPY**

**LABORATORY GROWN  
DIAMOND REPORT**

**LG628464767**

**IGI LABORATORY GROWN  
DIAMOND ID REPORT**

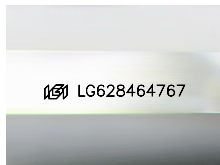
April 12, 2024  
IGI Report Number **LG628464767**  
**SQUARE EMERALD CUT**  
**5.49 X 5.38 X 3.55 MM**  
Carat Weight 0.94 CARAT  
Color Grade H  
Clarity Grade VS 1  
Polish EXCELLENT  
Symmetry EXCELLENT  
Fluorescence NONE  
Inscription(s) LG628464767

Comments: This Laboratory Grown Diamond was created by Chemical Vapor Deposition (CVD) growth process and may include post-growth treatment. Type Ila

**LABORATORY GROWN DIAMOND REPORT**

**IGI LABORATORY GROWN DIAMOND IDENTIFICATION REPORT**

April 12, 2024  
IGI Report Number **LG628464767**  
Description **LABORATORY GROWN DIAMOND**  
Shape and Cutting Style **SQUARE EMERALD CUT**  
Measurements **5.49 X 5.38 X 3.55 MM**



Sample Image Used

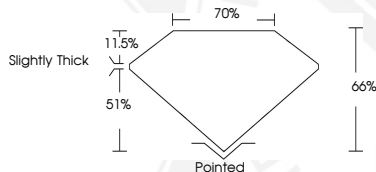
**GRADING RESULTS**

Carat Weight 0.94 CARAT  
Color Grade H  
Clarity Grade VS 1

**ADDITIONAL GRADING INFORMATION**

Polish EXCELLENT  
Symmetry EXCELLENT  
Fluorescence NONE  
Inscription(s) LG628464767

Comments: This Laboratory Grown Diamond was created by Chemical Vapor Deposition (CVD) growth process and may include post-growth treatment. Type Ila



**IGI LABORATORY GROWN  
DIAMOND ID REPORT**

April 12, 2024  
IGI Report Number **LG628464767**  
**SQUARE EMERALD CUT**  
**5.49 X 5.38 X 3.55 MM**  
Carat Weight 0.94 CARAT  
Color Grade H  
Clarity Grade VS 1  
Polish EXCELLENT  
Symmetry EXCELLENT  
Fluorescence NONE  
Inscription(s) LG628464767

Comments: This Laboratory Grown Diamond was created by Chemical Vapor Deposition (CVD) growth process and may include post-growth treatment. Type Ila



THIS DOCUMENT WAS PRODUCED WITH THE FOLLOWING SECURITY MEASURES: SPECIAL DOCUMENT PAPER, INK SCREENS, WATERMARK, BACKGROUND DESIGN, HOLOGRAM AND OTHER SECURITY FEATURES NOT LISTED AND DO EXCEED DOCUMENT SECURITY INDUSTRY GUIDELINES.

For terms & conditions and to verify this report, please visit [www.igi.org](http://www.igi.org)