



**ELECTRONIC COPY**

LG628464835

Report verification at [igi.org](http://igi.org)

**LABORATORY GROWN DIAMOND REPORT**

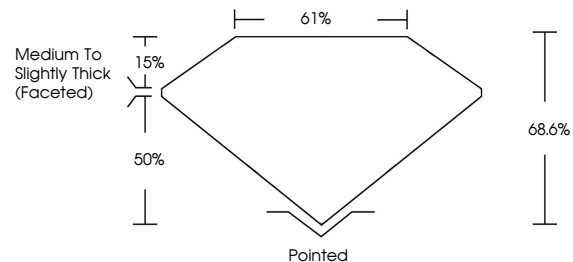
April 22, 2024  
 IGI Report Number **LG628464835**  
 Description **LABORATORY GROWN DIAMOND**  
 Shape and Cutting Style **CUSHION BRILLIANT**  
 Measurements **7.75 X 6.43 X 4.41 MM**  
**GRADING RESULTS**  
 Carat Weight **2.01 CARATS**  
 Color Grade **F**  
 Clarity Grade **VS 2**

**ADDITIONAL GRADING INFORMATION**

Polish **EXCELLENT**  
 Symmetry **EXCELLENT**  
 Fluorescence **NONE**  
 Inscription(s) **LG628464835**

Comments: This Laboratory Grown Diamond was created by Chemical Vapor Deposition (CVD) growth process and may include post-growth treatment. Type IIa

**PROPORTIONS**



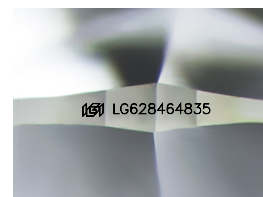
**GRADING SCALES**

**CLARITY**

| IF                  | VVS <sup>1-2</sup>          | VS <sup>1-2</sup>      | SI <sup>1-2</sup> | I <sup>1-3</sup> |
|---------------------|-----------------------------|------------------------|-------------------|------------------|
| Internally Flawless | Very Very Slightly Included | Very Slightly Included | Slightly Included | Included         |

**COLOR**

| D | E | F | G | H | I | J | Faint | Very Light | Light |
|---|---|---|---|---|---|---|-------|------------|-------|
|---|---|---|---|---|---|---|-------|------------|-------|



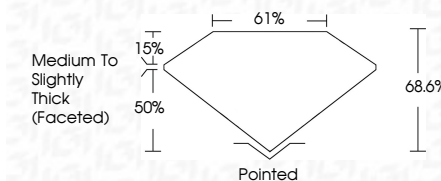
Sample Image Used

April 22, 2024  
 IGI Report Number **LG628464835**  
 Description **LABORATORY GROWN DIAMOND**  
 Shape and Cutting Style **CUSHION BRILLIANT**  
 Measurements **7.75 X 6.43 X 4.41 MM**  
**GRADING RESULTS**  
 Carat Weight **2.01 CARATS**  
 Color Grade **F**  
 Clarity Grade **VS 2**

**ADDITIONAL GRADING INFORMATION**

Polish **EXCELLENT**  
 Symmetry **EXCELLENT**  
 Fluorescence **NONE**  
 Inscription(s) **LG628464835**

Comments: This Laboratory Grown Diamond was created by Chemical Vapor Deposition (CVD) growth process and may include post-growth treatment. Type IIa



**IGI**

April 22, 2024  
 IGI Report No LG628464835  
**CUSHION BRILLIANT**  
 7.75 X 6.43 X 4.41 MM  
 Carat Weight **2.01 CARATS**  
 Color Grade **F**  
 Clarity Grade **VS 2**  
 Depth **68.6%**  
 Table **61%**  
 Girdle **Medium to Slightly Thick (Faceted)**  
 Culet **Pointed**  
 Polish **EXCELLENT**  
 Symmetry **EXCELLENT**  
 Fluorescence **NONE**  
 Inscription(s) **LG628464835**

Comments: This Laboratory Grown Diamond was created by Chemical Vapor Deposition (CVD) growth process and may include post-growth treatment. Type IIa