



**ELECTRONIC COPY**

LG628464854  
Report verification at igi.org

**LABORATORY GROWN DIAMOND REPORT**

April 16, 2024  
IGI Report Number **LG628464854**

Description **LABORATORY GROWN  
DIAMOND**

Shape and Cutting Style **MARQUISE BRILLIANT**

Measurements **14.15 X 7.26 X 4.62 MM**

**GRADING RESULTS**

Carat Weight **2.65 CARATS**

Color Grade **F**

Clarity Grade **VS 2**

**ADDITIONAL GRADING INFORMATION**

Polish **EXCELLENT**

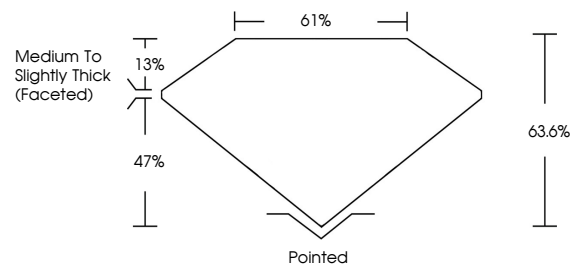
Symmetry **EXCELLENT**

Fluorescence **NONE**

Inscription(s) **IGI LG628464854**

Comments: This Laboratory Grown Diamond was created by Chemical Vapor Deposition (CVD) growth process and may include post-growth treatment. Type IIa

**PROPORTIONS**



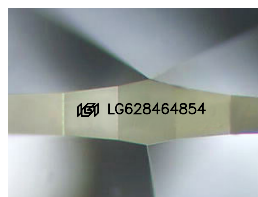
**GRADING SCALES**

**CLARITY**

IF	VVS <sup>1-2</sup>	VS <sup>1-2</sup>	SI <sup>1-2</sup>	I <sup>1-3</sup>
Internally Flawless	Very Very Slightly Included	Very Slightly Included	Slightly Included	Included

**COLOR**

D	E	F	G	H	I	J	Faint	Very Light	Light
---	---	---	---	---	---	---	-------	------------	-------



Sample Image Used

April 16, 2024  
IGI Report Number **LG628464854**

Description **LABORATORY GROWN  
DIAMOND**

Shape and Cutting Style **MARQUISE BRILLIANT**

Measurements **14.15 X 7.26 X 4.62 MM**

**GRADING RESULTS**

Carat Weight **2.65 CARATS**

Color Grade **F**

Clarity Grade **VS 2**

**ADDITIONAL GRADING INFORMATION**

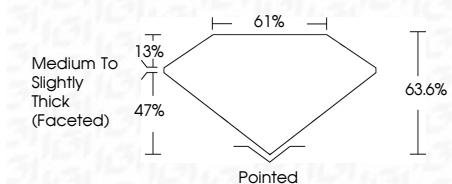
Polish **EXCELLENT**

Symmetry **EXCELLENT**

Fluorescence **NONE**

Inscription(s) **IGI LG628464854**

Comments: This Laboratory Grown Diamond was created by Chemical Vapor Deposition (CVD) growth process and may include post-growth treatment. Type IIa



**IGI**

April 16, 2024  
IGI Report No LG628464854  
MARQUISE BRILLIANT  
14.15 X 7.26 X 4.62 MM  
2.65 CARATS  
F  
VS 2  
63.6%  
61%  
Medium to Slightly Thick (Faceted)  
Pointed  
EXCELLENT  
EXCELLENT  
NONE  
IGI LG628464854  
Comments: This Laboratory Grown Diamond was created by Chemical Vapor Deposition (CVD) growth process and may include post-growth treatment. Type IIa