



ELECTRONIC COPY

LG628472758

Report verification at igi.org

LABORATORY GROWN DIAMOND REPORT

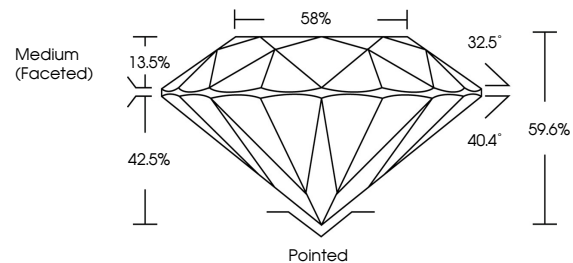
April 4, 2024
 IGI Report Number **LG628472758**
 Description **LABORATORY GROWN
DIAMOND**
 Shape and Cutting Style **ROUND BRILLIANT**
 Measurements **9.89 - 9.94 X 5.91 MM**
GRADING RESULTS
 Carat Weight **3.57 CARATS**
 Color Grade **F**
 Clarity Grade **VS 1**
 Cut Grade **EXCELLENT**

ADDITIONAL GRADING INFORMATION

Polish **EXCELLENT**
 Symmetry **EXCELLENT**
 Fluorescence **NONE**
 Inscription(s) **IGI LG628472758**

Comments: This Laboratory Grown Diamond was created by Chemical Vapor Deposition (CVD) growth process and may include post-growth treatment. Type IIa

PROPORTIONS



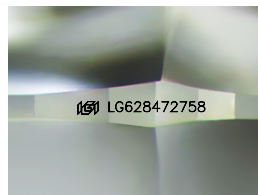
GRADING SCALES

CLARITY

IF	VVS ¹⁻²	VS ¹⁻²	SI ¹⁻²	I ¹⁻³
Internally Flawless	Very Very Slightly Included	Very Slightly Included	Slightly Included	Included

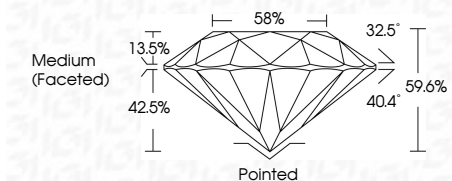
COLOR

D	E	F	G	H	I	J	Faint	Very Light	Light
---	---	---	---	---	---	---	-------	------------	-------



Sample Image Used

April 4, 2024
 IGI Report Number **LG628472758**
 Description **LABORATORY GROWN
DIAMOND**
 Shape and Cutting Style **ROUND BRILLIANT**
 Measurements **9.89 - 9.94 X 5.91 MM**
GRADING RESULTS
 Carat Weight **3.57 CARATS**
 Color Grade **F**
 Clarity Grade **VS 1**
 Cut Grade **EXCELLENT**



ADDITIONAL GRADING INFORMATION

Polish **EXCELLENT**
 Symmetry **EXCELLENT**
 Fluorescence **NONE**
 Inscription(s) **IGI LG628472758**
 Comments: This Laboratory Grown Diamond was created by Chemical Vapor Deposition (CVD) growth process and may include post-growth treatment. Type IIa



April 4, 2024
 IGI Report No LG628472758
ROUND BRILLIANT
 9.89 - 9.94 X 5.91 MM
 Carat Weight **3.57 CARATS**
 Color Grade **F**
 Clarity Grade **VS 1**
 Depth **EXCELLENT**
 Table **59.06%**
 Girdle **58%**
 Medium (Faceted)
 Culet **Pointed**
 Polish **EXCELLENT**
 Symmetry **EXCELLENT**
 Fluorescence **NONE**
 Inscription(s) **IGI LG628472758**
 Comments: This Laboratory Grown Diamond was created by Chemical Vapor Deposition (CVD) growth process and may include post-growth treatment. Type IIa

