



ELECTRONIC COPY

LABORATORY GROWN DIAMOND REPORT

LG628477019

Report verification at igi.org

LABORATORY GROWN DIAMOND REPORT

LABORATORY GROWN DIAMOND REPORT

LABORATORY GROWN DIAMOND REPORT

April 4, 2024
IGI Report Number LG628477019
Description LABORATORY GROWN DIAMOND
Shape and Cutting Style EMERALD CUT
Measurements 10.57 X 7.51 X 5.14 MM

GRADING RESULTS

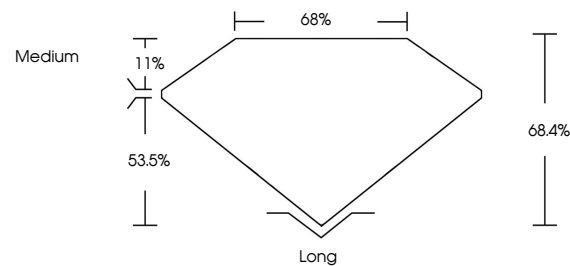
Carat Weight 4.07 CARATS
Color Grade D
Clarity Grade VS 1

ADDITIONAL GRADING INFORMATION

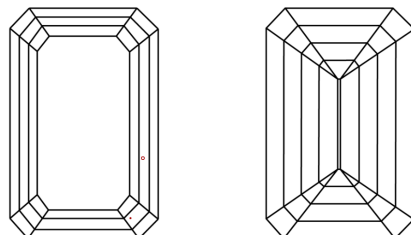
Polish EXCELLENT
Symmetry EXCELLENT
Fluorescence NONE
Inscription(s) IGI LG628477019

Comments: This Laboratory Grown Diamond was created by Chemical Vapor Deposition (CVD) growth process and may include post-growth treatment. Type IIa

PROPORTIONS



CLARITY CHARACTERISTICS



KEY TO SYMBOLS

Red symbols indicate internal characteristics.
Green symbols indicate external characteristics.

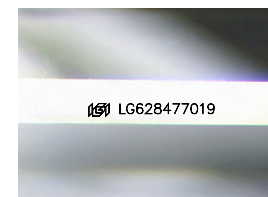
GRADING SCALES

CLARITY

Table mapping clarity grades (IF, VVS, VS, SI, I) to internal characteristics (Internally Flawless, Very Very Slightly Included, etc.)

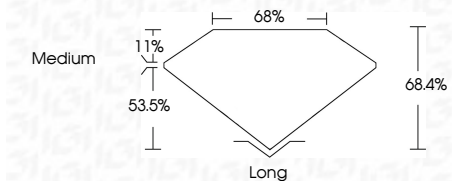
COLOR

Table mapping color grades (D, E, F, G, H, I, J) to color descriptions (Faint, Very Light, Light)



Sample Image Used

April 4, 2024
IGI Report Number LG628477019
Description LABORATORY GROWN DIAMOND
Shape and Cutting Style EMERALD CUT
Measurements 10.57 X 7.51 X 5.14 MM
GRADING RESULTS
Carat Weight 4.07 CARATS
Color Grade D
Clarity Grade VS 1



ADDITIONAL GRADING INFORMATION

Polish EXCELLENT
Symmetry EXCELLENT
Fluorescence NONE
Inscription(s) IGI LG628477019
Comments: This Laboratory Grown Diamond was created by Chemical Vapor Deposition (CVD) growth process and may include post-growth treatment. Type IIa



Summary of report details including date, report number, measurements, and grading results.

Comments: This Laboratory Grown Diamond was created by Chemical Vapor Deposition (CVD) growth process and may include post-growth treatment. Type IIa