



ELECTRONIC COPY

LABORATORY GROWN DIAMOND REPORT

LG628478894

Report verification at igi.org

LABORATORY GROWN DIAMOND REPORT

LABORATORY GROWN DIAMOND REPORT

LABORATORY GROWN DIAMOND REPORT

April 8, 2024
IGI Report Number LG628478894
Description LABORATORY GROWN DIAMOND
Shape and Cutting Style PRINCESS CUT
Measurements 6.75 X 6.54 X 4.72 MM

GRADING RESULTS

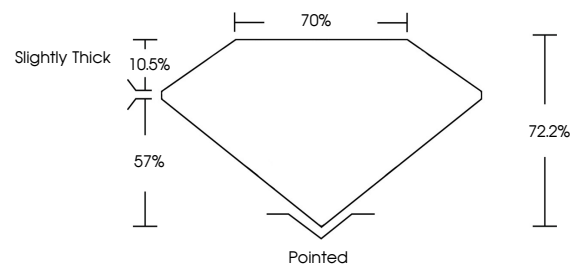
Carat Weight 1.80 CARAT
Color Grade H
Clarity Grade VS 1

ADDITIONAL GRADING INFORMATION

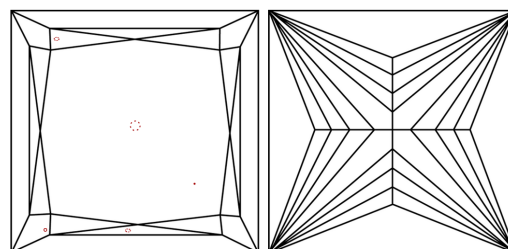
Polish EXCELLENT
Symmetry EXCELLENT
Fluorescence NONE
Inscription(s) IGI LG628478894

Comments: This Laboratory Grown Diamond was created by Chemical Vapor Deposition (CVD) growth process and may include post-growth treatment. Type IIa

PROPORTIONS



CLARITY CHARACTERISTICS



KEY TO SYMBOLS

Red symbols indicate internal characteristics.
Green symbols indicate external characteristics.

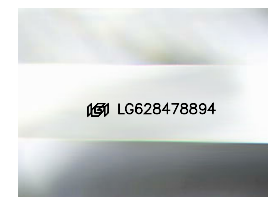
GRADING SCALES

CLARITY

Table mapping clarity grades (IF, VVS, VS, SI, I) to internal characteristics (Internally Flawless, Very Very Slightly Included, etc.)

COLOR

Table mapping color grades (D, E, F, G, H, I, J) to color descriptions (Faint, Very Light, Light)

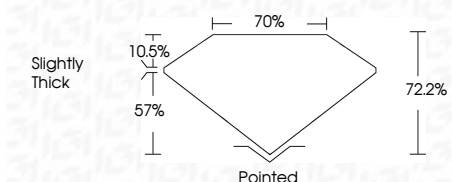


Sample Image Used

April 8, 2024
IGI Report Number LG628478894
Description LABORATORY GROWN DIAMOND
Shape and Cutting Style PRINCESS CUT
Measurements 6.75 X 6.54 X 4.72 MM
GRADING RESULTS
Carat Weight 1.80 CARAT
Color Grade H
Clarity Grade VS 1

ADDITIONAL GRADING INFORMATION

Polish EXCELLENT
Symmetry EXCELLENT
Fluorescence NONE
Inscription(s) IGI LG628478894
Comments: This Laboratory Grown Diamond was created by Chemical Vapor Deposition (CVD) growth process and may include post-growth treatment. Type IIa



IGI

April 8, 2024
IGI Report No. LG628478894
PRINCESS CUT
1.80 CARAT H
6.75 X 6.54 X 4.72 MM
Color Grade VS 1
Depth 72.2%
Table 70%
Girdle Slightly Thick
Culet Pointed
Polish EXCELLENT
Symmetry EXCELLENT
Fluorescence NONE
Inscription(s) IGI LG628478894
Comments: This Laboratory Grown Diamond was created by Chemical Vapor Deposition (CVD) growth process and may include post-growth treatment. Type IIa