



**INTERNATIONAL  
GEMOLOGICAL  
INSTITUTE**

**ELECTRONIC COPY**

**LABORATORY GROWN DIAMOND REPORT**

April 3, 2024  
 IGI Report Number **LG628484381**  
 Description **LABORATORY GROWN  
DIAMOND**  
 Shape and Cutting Style **ROUND BRILLIANT**  
 Measurements **8.16 - 8.23 X 4.90 MM**  
**GRADING RESULTS**  
 Carat Weight **2.01 CARATS**  
 Color Grade **D**  
 Clarity Grade **VS 1**  
 Cut Grade **IDEAL**

**ADDITIONAL GRADING INFORMATION**

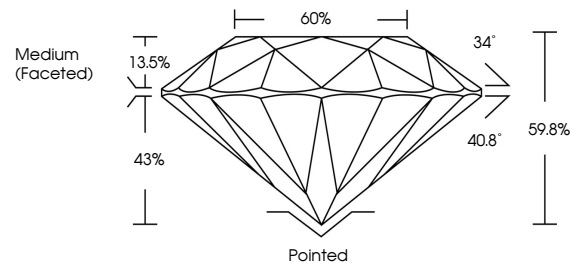
Polish **EXCELLENT**  
 Symmetry **EXCELLENT**  
 Fluorescence **NONE**  
 Inscription(s) **IGI LG628484381**

Comments: HEARTS & ARROWS  
 This Laboratory Grown Diamond was created by  
 Chemical Vapor Deposition (CVD) growth process and  
 may include post-growth treatment.  
 Type IIa

**LABORATORY GROWN DIAMOND REPORT**

**LG628484381**  
 Report verification at [igi.org](http://igi.org)

**PROPORTIONS**



**LABORATORY GROWN  
DIAMOND REPORT**

**GRADING SCALES**

**CLARITY**

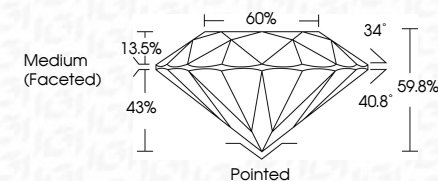
IF	VVS <sup>1-2</sup>	VS <sup>1-2</sup>	SI <sup>1-2</sup>	I <sup>1-3</sup>
Internally Flawless	Very Very Slightly Included	Very Slightly Included	Slightly Included	Included

**COLOR**

D	E	F	G	H	I	J	Faint	Very Light	Light
---	---	---	---	---	---	---	-------	------------	-------

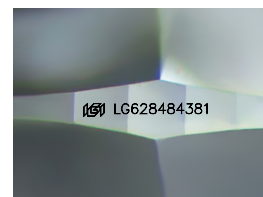
**LABORATORY GROWN DIAMOND REPORT**

April 3, 2024  
 IGI Report Number **LG628484381**  
 Description **LABORATORY GROWN  
DIAMOND**  
 Shape and Cutting Style **ROUND BRILLIANT**  
 Measurements **8.16 - 8.23 X 4.90 MM**  
**GRADING RESULTS**  
 Carat Weight **2.01 CARATS**  
 Color Grade **D**  
 Clarity Grade **VS 1**  
 Cut Grade **IDEAL**



**ADDITIONAL GRADING INFORMATION**

Polish **EXCELLENT**  
 Symmetry **EXCELLENT**  
 Fluorescence **NONE**  
 Inscription(s) **IGI LG628484381**  
 Comments: HEARTS & ARROWS  
 This Laboratory Grown Diamond was created by  
 Chemical Vapor Deposition (CVD) growth process and  
 may include post-growth treatment.  
 Type IIa



Sample Image Used



[www.igi.org](http://www.igi.org)



© IGI 2020, International Gemological Institute

FD - 10 20

THIS DOCUMENT WAS PRODUCED WITH THE FOLLOWING SECURITY MEASURES: SPECIAL DOCUMENT PAPER, INK SCREENS, WATERMARK BACKGROUND DESIGNS, HOLOGRAM AND OTHER SECURITY FEATURES NOT LISTED AND DO EXCEED DOCUMENT SECURITY INDUSTRY GUIDELINES.



**IGI**

April 3, 2024  
 IGI Report No **LG628484381**  
**ROUND BRILLIANT**  
**8.16 - 8.23 X 4.90 MM**  
 Carat Weight **2.01 CARATS**  
 Color Grade **D**  
 Clarity Grade **VS 1**  
 Cut Grade **IDEAL**  
 Depth **59.8%**  
 Table **60%**  
 Girdle **Medium (Faceted)**  
 Culet **Pointed**  
 Polish **EXCELLENT**  
 Symmetry **EXCELLENT**  
 Fluorescence **NONE**  
 Inscription(s) **IGI LG628484381**  
 Comments: HEARTS & ARROWS  
 This Laboratory Grown Diamond was  
 created by Chemical Vapor Deposition  
 (CVD) growth process and may include  
 post-growth treatment.  
 Type IIa