



ELECTRONIC COPY

LABORATORY GROWN DIAMOND REPORT

LG628484889
Report verification at igi.org

LABORATORY GROWN
DIAMOND REPORT

LABORATORY GROWN DIAMOND REPORT

LABORATORY GROWN DIAMOND REPORT

April 4, 2024
IGI Report Number **LG628484889**

Description **LABORATORY GROWN
DIAMOND**

Shape and Cutting Style **CUSHION MODIFIED BRILLIANT**

Measurements **7.08 X 5.62 X 3.62 MM**

GRADING RESULTS

Carat Weight **1.09 CARAT**

Color Grade **H**

Clarity Grade **VVS 2**

ADDITIONAL GRADING INFORMATION

Polish **EXCELLENT**

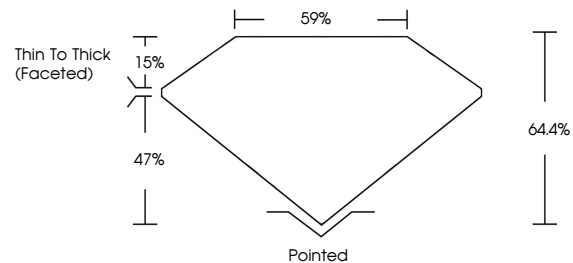
Symmetry **EXCELLENT**

Fluorescence **NONE**

Inscription(s) **IGI LG628484889**

Comments: This Laboratory Grown Diamond was created by Chemical Vapor Deposition (CVD) growth process and may include post-growth treatment. Type IIa

PROPORTIONS



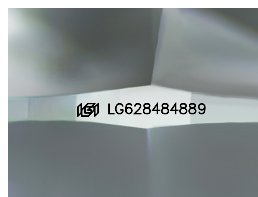
GRADING SCALES

CLARITY

IF	VVS ¹⁻²	VS ¹⁻²	SI ¹⁻²	I ¹⁻³
Internally Flawless	Very Very Slightly Included	Very Slightly Included	Slightly Included	Included

COLOR

D	E	F	G	H	I	J	Faint	Very Light	Light
---	---	---	---	---	---	---	-------	------------	-------



Sample Image Used

April 4, 2024

IGI Report Number **LG628484889**

Description **LABORATORY GROWN
DIAMOND**

Shape and Cutting Style **CUSHION MODIFIED
BRILLIANT**

Measurements **7.08 X 5.62 X 3.62 MM**

GRADING RESULTS

Carat Weight **1.09 CARAT**

Color Grade **H**

Clarity Grade **VVS 2**

ADDITIONAL GRADING INFORMATION

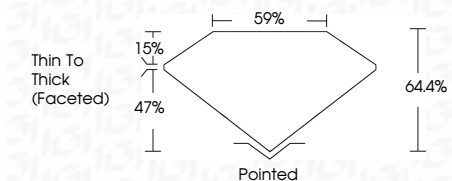
Polish **EXCELLENT**

Symmetry **EXCELLENT**

Fluorescence **NONE**

Inscription(s) **IGI LG628484889**

Comments: This Laboratory Grown Diamond was created by Chemical Vapor Deposition (CVD) growth process and may include post-growth treatment. Type IIa



IGI

April 4, 2024	IGI Report No LG628484889	CUSHION MODIFIED BRILLIANT	1.09 CARAT	H	VVS 2	64.4%	59%	Pointed	EXCELLENT	EXCELLENT	NONE	IGI LG628484889
7.08 X 5.62 X 3.62 MM	Carat Weight	Color Grade	Clarity Grade	Depth	Table	Graile	Thin To Thick (Faceted)	Culet	Polish	Symmetry	Fluorescence	Inscription(s)

Comments: This Laboratory Grown Diamond was created by Chemical Vapor Deposition (CVD) growth process and may include post-growth treatment. Type IIa