



ELECTRONIC COPY

LABORATORY GROWN DIAMOND REPORT

April 2, 2024
 IGI Report Number **LG628490634**
 Description **LABORATORY GROWN
DIAMOND**
 Shape and Cutting Style **ROUND BRILLIANT**
 Measurements **8.12 - 8.15 X 4.99 MM**
GRADING RESULTS
 Carat Weight **2.04 CARATS**
 Color Grade **D**
 Clarity Grade **VS 1**
 Cut Grade **IDEAL**

ADDITIONAL GRADING INFORMATION

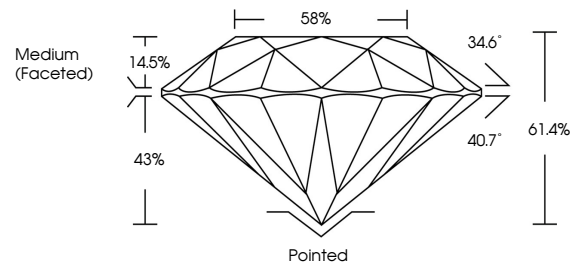
Polish **EXCELLENT**
 Symmetry **EXCELLENT**
 Fluorescence **NONE**
 Inscription(s) **LG628490634**

Comments: HEARTS & ARROWS
 This Laboratory Grown Diamond was created by
 Chemical Vapor Deposition (CVD) growth process and
 may include post-growth treatment.
 Type IIa

LABORATORY GROWN DIAMOND REPORT

LG628490634
 Report verification at igi.org

PROPORTIONS



www.igi.org

**LABORATORY GROWN
DIAMOND REPORT**

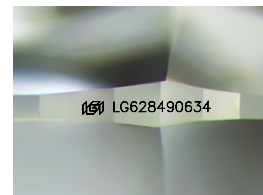
GRADING SCALES

CLARITY

IF	VVS ¹⁻²	VS ¹⁻²	SI ¹⁻²	I ¹⁻³
Internally Flawless	Very Very Slightly Included	Very Slightly Included	Slightly Included	Included

COLOR

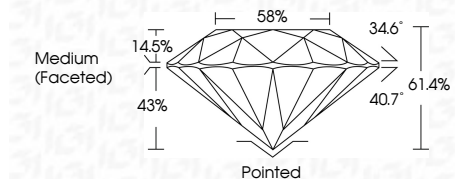
D	E	F	G	H	I	J	Faint	Very Light	Light
---	---	---	---	---	---	---	-------	------------	-------



Sample Image Used

LABORATORY GROWN DIAMOND REPORT

April 2, 2024
 IGI Report Number **LG628490634**
 Description **LABORATORY GROWN
DIAMOND**
 Shape and Cutting Style **ROUND BRILLIANT**
 Measurements **8.12 - 8.15 X 4.99 MM**
GRADING RESULTS
 Carat Weight **2.04 CARATS**
 Color Grade **D**
 Clarity Grade **VS 1**
 Cut Grade **IDEAL**



ADDITIONAL GRADING INFORMATION

Polish **EXCELLENT**
 Symmetry **EXCELLENT**
 Fluorescence **NONE**
 Inscription(s) **LG628490634**
 Comments: HEARTS & ARROWS
 This Laboratory Grown Diamond was created by
 Chemical Vapor Deposition (CVD) growth process and
 may include post-growth treatment.
 Type IIa



April 2, 2024
 IGI Report No **LG628490634**
ROUND BRILLIANT
8.12 - 8.15 X 4.99 MM
 Carat Weight **2.04 CARATS**
 Color Grade **D**
 Clarity Grade **VS 1**
 Cut Grade **IDEAL**
 Depth **61.4%**
 Table **58%**
 Girdle **Medium (Faceted)**
 Culet **Pointed**
 Polish **EXCELLENT**
 Symmetry **EXCELLENT**
 Fluorescence **NONE**
 Inscription(s) **LG628490634**
 Comments: **HEARTS & ARROWS**
 This Laboratory Grown Diamond was created by Chemical Vapor Deposition (CVD) growth process and may include post-growth treatment.
 Type IIa