



**INTERNATIONAL  
GEMOLOGICAL  
INSTITUTE**

**ELECTRONIC COPY**

**LABORATORY GROWN  
DIAMOND REPORT**

**LG628496190**

**IGI LABORATORY GROWN  
DIAMOND ID REPORT**

April 9, 2024

IGI Report Number **LG628496190**

**CUT CORNERED RECTANGULAR  
MODIFIED BRILLIANT**

**6.93 X 4.50 X 3.05 MM**

Carat Weight 0.81 CARAT  
Color Grade D  
Clarity Grade IF.  
Polish EXCELLENT  
Symmetry EXCELLENT  
Fluorescence NONE  
Inscription(s) IGI LG628496190

Comments: As Grown - No indication of post-growth treatment. This Laboratory Grown Diamond was created by High Pressure High Temperature (HPHT) growth process. Type II

**LABORATORY GROWN DIAMOND REPORT**

**IGI LABORATORY GROWN DIAMOND IDENTIFICATION REPORT**

April 9, 2024

IGI Report Number LG628496190

Description LABORATORY GROWN DIAMOND

Shape and Cutting Style CUT CORNERED RECTANGULAR MODIFIED BRILLIANT

Measurements 6.93 X 4.50 X 3.05 MM

**GRADING RESULTS**

Carat Weight 0.81 CARAT

Color Grade D

Clarity Grade INTERNALLY FLAWLESS

**ADDITIONAL GRADING INFORMATION**

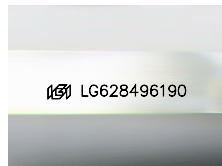
Polish EXCELLENT

Symmetry EXCELLENT

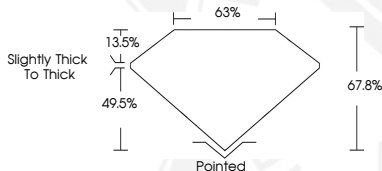
Fluorescence NONE

Inscription(s) IGI LG628496190

Comments: As Grown - No indication of post-growth treatment. This Laboratory Grown Diamond was created by High Pressure High Temperature (HPHT) growth process. Type II



Sample Image Used



**IGI LABORATORY GROWN  
DIAMOND ID REPORT**

April 9, 2024

IGI Report Number **LG628496190**

**CUT CORNERED RECTANGULAR  
MODIFIED BRILLIANT**

**6.93 X 4.50 X 3.05 MM**

Carat Weight 0.81 CARAT  
Color Grade D  
Clarity Grade IF.  
Polish EXCELLENT  
Symmetry EXCELLENT  
Fluorescence NONE  
Inscription(s) IGI LG628496190

Comments: As Grown - No indication of post-growth treatment. This Laboratory Grown Diamond was created by High Pressure High Temperature (HPHT) growth process. Type II

THIS DOCUMENT WAS PRODUCED WITH THE FOLLOWING SECURITY MEASURES: SPECIAL DOCUMENT PAPER, INK SCREENS, WATERMARK, BACKGROUND DESIGN, HOLOGRAM AND OTHER SECURITY FEATURES NOT LISTED AND DO EXCEED DOCUMENT SECURITY INDUSTRY GUIDELINES.

For terms & conditions and to verify this report, please visit [www.igi.org](http://www.igi.org)