



ELECTRONIC COPY

LABORATORY GROWN DIAMOND REPORT

LG628498513

Report verification at igi.org

**LABORATORY GROWN
DIAMOND REPORT**

LABORATORY GROWN DIAMOND REPORT

LABORATORY GROWN DIAMOND REPORT

April 6, 2024
IGI Report Number **LG628498513**
Description **LABORATORY GROWN
DIAMOND**
Shape and Cutting Style **SQUARE EMERALD CUT**
Measurements **8.75 X 8.50 X 5.50 MM**

GRADING RESULTS

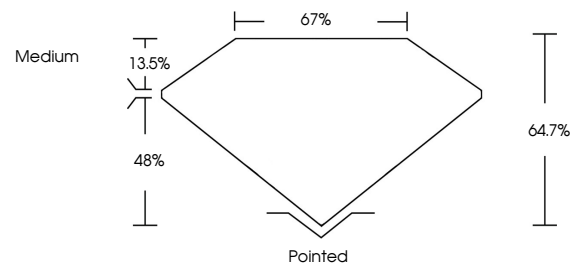
Carat Weight **3.73 CARATS**
Color Grade **H**
Clarity Grade **SI 1**

ADDITIONAL GRADING INFORMATION

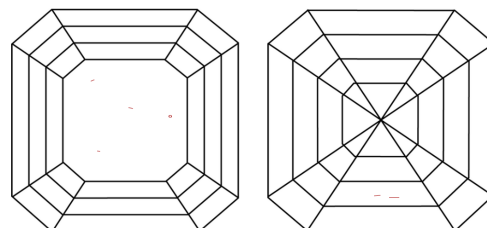
Polish **EXCELLENT**
Symmetry **EXCELLENT**
Fluorescence **NONE**
Inscription(s) **IGI LG628498513**

Comments: This Laboratory Grown Diamond was created by Chemical Vapor Deposition (CVD) growth process and may include post-growth treatment. Type IIa

PROPORTIONS



CLARITY CHARACTERISTICS



KEY TO SYMBOLS

Red symbols indicate internal characteristics.
Green symbols indicate external characteristics.

GRADING SCALES

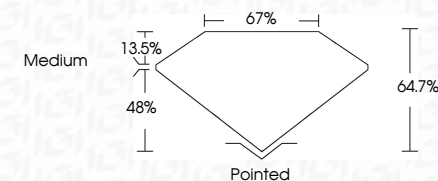
CLARITY

IF	VVS ¹⁻²	VS ¹⁻²	SI ¹⁻²	I ¹⁻³
Internally Flawless	Very Very Slightly Included	Very Slightly Included	Slightly Included	Included

COLOR

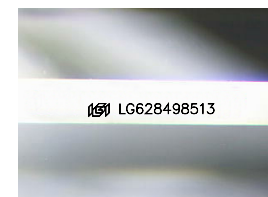
D	E	F	G	H	I	J	Faint	Very Light	Light
---	---	---	---	---	---	---	-------	------------	-------

April 6, 2024
IGI Report Number **LG628498513**
Description **LABORATORY GROWN
DIAMOND**
Shape and Cutting Style **SQUARE EMERALD CUT**
Measurements **8.75 X 8.50 X 5.50 MM**
GRADING RESULTS
Carat Weight **3.73 CARATS**
Color Grade **H**
Clarity Grade **SI 1**



ADDITIONAL GRADING INFORMATION

Polish **EXCELLENT**
Symmetry **EXCELLENT**
Fluorescence **NONE**
Inscription(s) **IGI LG628498513**
Comments: This Laboratory Grown Diamond was created by Chemical Vapor Deposition (CVD) growth process and may include post-growth treatment. Type IIa



Sample Image Used



IGI

April 6, 2024
IGI Report No LG628498513
SQUARE EMERALD CUT
8.75 X 8.50 X 5.50 MM
3.73 CARATS
H
SI 1
64.7%
67%
Medium
Pointed
EXCELLENT
EXCELLENT
NONE
IGI LG628498513

Comments: This Laboratory Grown Diamond was created by Chemical Vapor Deposition (CVD) growth process and may include post-growth treatment. Type IIa