



**INTERNATIONAL  
GEMOLOGICAL  
INSTITUTE**

**ELECTRONIC COPY**

**LABORATORY GROWN  
DIAMOND REPORT**

**LG629400285**

**IGI LABORATORY GROWN  
DIAMOND ID REPORT**

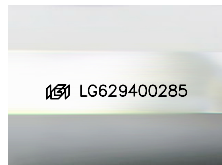
April 12, 2024  
IGI Report Number **LG629400285**  
**EMERALD CUT**  
**5.27 X 3.74 X 2.51 MM**  
Carat Weight 0.49 CARAT  
Color Grade J  
Clarity Grade VVS 2  
Polish VERY GOOD  
Symmetry VERY GOOD  
Fluorescence NONE  
Inscription(s) LG629400285

Comments: This Laboratory Grown Diamond was created by Chemical Vapor Deposition (CVD) growth process and may include post-growth treatment. Type Ia

**LABORATORY GROWN DIAMOND REPORT**

**IGI LABORATORY GROWN DIAMOND IDENTIFICATION REPORT**

April 12, 2024  
IGI Report Number **LG629400285**  
Description **LABORATORY GROWN DIAMOND**  
Shape and Cutting Style **EMERALD CUT**  
Measurements **5.27 X 3.74 X 2.51 MM**



Sample Image Used

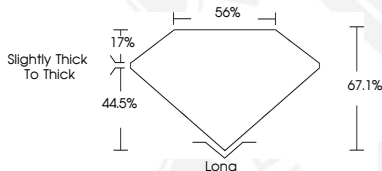
**GRADING RESULTS**

Carat Weight 0.49 CARAT  
Color Grade J  
Clarity Grade VVS 2

**ADDITIONAL GRADING INFORMATION**

Polish VERY GOOD  
Symmetry VERY GOOD  
Fluorescence NONE  
Inscription(s) LG629400285

Comments: This Laboratory Grown Diamond was created by Chemical Vapor Deposition (CVD) growth process and may include post-growth treatment. Type Ia



**IGI LABORATORY GROWN  
DIAMOND ID REPORT**

April 12, 2024  
IGI Report Number **LG629400285**  
**EMERALD CUT**  
**5.27 X 3.74 X 2.51 MM**  
Carat Weight 0.49 CARAT  
Color Grade J  
Clarity Grade VVS 2  
Polish VERY GOOD  
Symmetry VERY GOOD  
Fluorescence NONE  
Inscription(s) LG629400285

Comments: This Laboratory Grown Diamond was created by Chemical Vapor Deposition (CVD) growth process and may include post-growth treatment. Type Ia



THIS DOCUMENT WAS PRODUCED WITH THE FOLLOWING SECURITY MEASURES: SPECIAL DOCUMENT PAPER, INK SCREENS, WATERMARK, BACKGROUND DESIGN, HOLOGRAM AND OTHER SECURITY FEATURES NOT LISTED AND DO EXCEED DOCUMENT SECURITY INDUSTRY GUIDELINES.

For terms & conditions and to verify this report, please visit [www.igi.org](http://www.igi.org)