



ELECTRONIC COPY

LABORATORY GROWN DIAMOND REPORT

April 16, 2024	
IGI Report Number	LG629401891
Description	LABORATORY GROWN DIAMOND
Shape and Cutting Style	ROUND BRILLIANT
Measurements	10.07 - 10.12 X 6.12 MM

GRADING RESULTS

Carat Weight	3.85 CARATS
Color Grade	F
Clarity Grade	VS 1
Cut Grade	IDEAL

ADDITIONAL GRADING INFORMATION

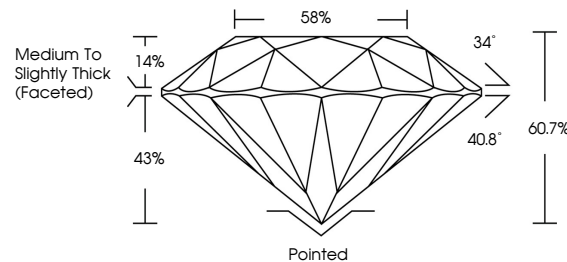
Polish	EXCELLENT
Symmetry	EXCELLENT
Fluorescence	NONE
Inscription(s)	15 LG629401891

Comments: This Laboratory Grown Diamond was created by Chemical Vapor Deposition (CVD) growth process and may include post-growth treatment.
Type IIa

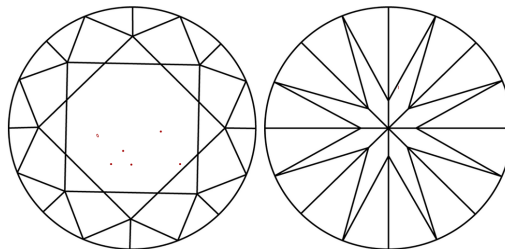
LABORATORY GROWN DIAMOND REPORT

LG629401891
Report verification at igi.org

PROPORTIONS



CLARITY CHARACTERISTICS



KEY TO SYMBOLS

Red symbols indicate internal characteristics.
Green symbols indicate external characteristics.

LABORATORY GROWN
DIAMOND REPORT

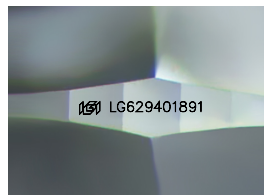
GRADING SCALES

CLARITY

IF	VVS ¹⁻²	VS ¹⁻²	SI ¹⁻²	I ¹⁻³
Internally Flawless	Very Very Slightly Included	Very Slightly Included	Slightly Included	Included

COLOR

D E F G H I J Faint Very Light Light



Sample Image Used



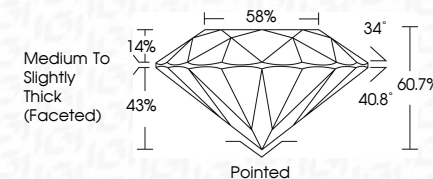
© IGI 2020, International Gemological Institute

FD - 10 20

LABORATORY GROWN DIAMOND REPORT

April 16, 2024	
IGI Report Number	LG629401891
Description	LABORATORY GROWN DIAMOND
Shape and Cutting Style	ROUND BRILLIANT
Measurements	10.07 - 10.12 X 6.12 MM

Carat Weight	3.85 CARATS
Color Grade	F
Clarity Grade	VS 1
Cut Grade	IDEAL



ADDITIONAL GRADING INFORMATION

Polish	EXCELLENT
Symmetry	EXCELLENT
Fluorescence	NONE
Inscription(s)	 LG629401891

Comments: This Laboratory Grown Diamond was created by Chemical Vapor Deposition (CVD) growth process and may include post-growth treatment.
Type IIa



April 14, 2024	10.07 - 10.12 X 6.12 MM	3.85 CARATS	VS 1	IDEAL	60.7%	58%	Medium to Slightly Thick (foolhard)	Pointed	Excellent	EXCELLENT	NONE	1891 LG529401891
GI REPORT NO. LG529401891	Carat Weight											
ROUND BRILLIANT	Color Grade											
	Clarity Grade											
	Cut Grade											
	Depth											
	Table											
	Girdle											
	Culet											
	Polish											
	Symmetry											
	Fluorescence											
	Inscription(s)											

Comments:
 Created by: Chemical Vapor Deposition
 treated by Chemical Vapor Deposition
 (CVD) growth process and may include
 post-growth treatment.
 Type IIA

www.igi.org