



ELECTRONIC COPY

LG629405160
Report verification at igi.org



April 16, 2024
IGI Report Number LG629405160
Description LABORATORY GROWN DIAMOND
Shape and Cutting Style CUT CORNERED RECTANGULAR MODIFIED BRILLIANT
Measurements 10.63 X 6.69 X 4.56 MM
GRADING RESULTS
Carat Weight 3.09 CARATS
Color Grade FANCY INTENSE GREYISH YELLOW
Clarity Grade VS 1

LABORATORY GROWN DIAMOND REPORT

April 16, 2024
IGI Report Number LG629405160
Description LABORATORY GROWN DIAMOND
Shape and Cutting Style CUT CORNERED RECTANGULAR MODIFIED BRILLIANT
Measurements 10.63 X 6.69 X 4.56 MM

GRADING RESULTS

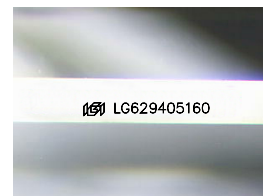
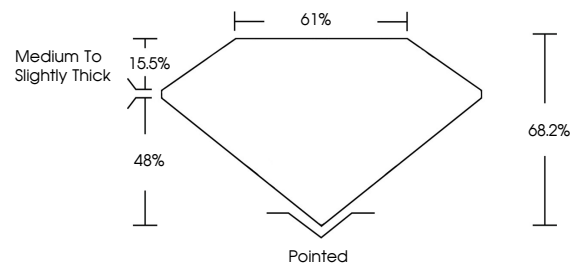
Carat Weight 3.09 CARATS
Color Grade FANCY INTENSE GREYISH YELLOW
Clarity Grade VS 1

ADDITIONAL GRADING INFORMATION

Polish EXCELLENT
Symmetry EXCELLENT
Fluorescence NONE
Inscription(s) LG629405160

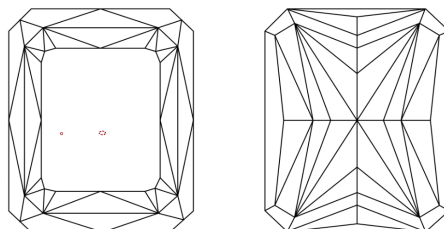
Comments: This Laboratory Grown Diamond was created by Chemical Vapor Deposition (CVD) growth process and may include post-growth treatment.

PROPORTIONS



Sample Image Used

CLARITY CHARACTERISTICS



KEY TO SYMBOLS

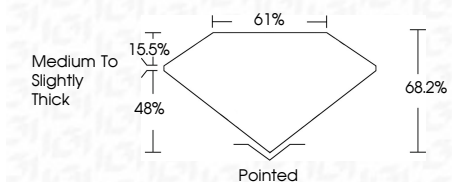
Red symbols indicate internal characteristics.
Green symbols indicate external characteristics.

COLOR

D E F G H I J Faint Very Light Light

CLARITY

Table with columns for clarity grades: IF, VS 1-2, VS 1-2, SI 1-2, I 1-3. Rows for Internally Flawless, Very Very Slightly Included, Very Slightly Included, Slightly Included, Included.



ADDITIONAL GRADING INFORMATION

Polish EXCELLENT
Symmetry EXCELLENT
Fluorescence NONE
Inscription(s) LG629405160
Comments: This Laboratory Grown Diamond was created by Chemical Vapor Deposition (CVD) growth process and may include post-growth treatment.



IGI



April 16, 2024
IGI Report No LG629405160
CUT CORNERED RECT. MODIFIED BRILLIANT
10.63 X 6.69 X 4.56 MM
3.09 CARATS
FANCY INTENSE GREYISH YELLOW
VS 1
68.2%
61%
Medium to Slightly Thick
Pointed
EXCELLENT
EXCELLENT
NONE
LG629405160

Comments: This Laboratory Grown Diamond was created by Chemical Vapor Deposition (CVD) growth process and may include post-growth treatment.