



**ELECTRONIC COPY**

LABORATORY GROWN DIAMOND REPORT

LG629406575

Report verification at [igi.org](http://igi.org)

LABORATORY GROWN  
DIAMOND REPORT

LABORATORY GROWN DIAMOND REPORT

LABORATORY GROWN DIAMOND REPORT

April 13, 2024  
IGI Report Number **LG629406575**  
Description **LABORATORY GROWN  
DIAMOND**  
Shape and Cutting Style **CUSHION BRILLIANT**  
Measurements **6.75 X 5.49 X 3.73 MM**

**GRADING RESULTS**

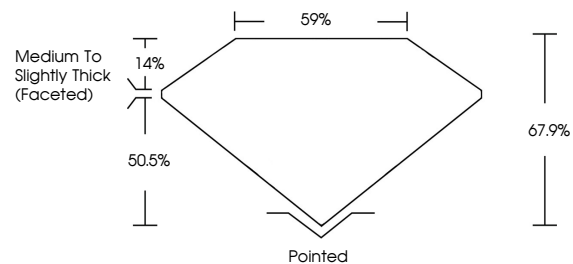
Carat Weight **1.06 CARAT**  
Color Grade **F**  
Clarity Grade **VS 1**

**ADDITIONAL GRADING INFORMATION**

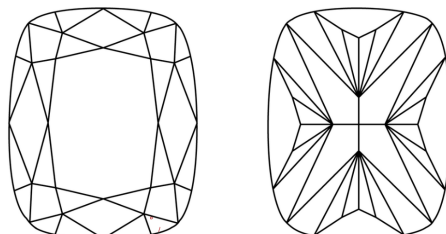
Polish **EXCELLENT**  
Symmetry **EXCELLENT**  
Fluorescence **NONE**  
Inscription(s) **IGI LG629406575**

Comments: This Laboratory Grown Diamond was created by Chemical Vapor Deposition (CVD) growth process and may include post-growth treatment. Type IIa

**PROPORTIONS**



**CLARITY CHARACTERISTICS**



**KEY TO SYMBOLS**

Red symbols indicate internal characteristics.  
Green symbols indicate external characteristics.

**GRADING SCALES**

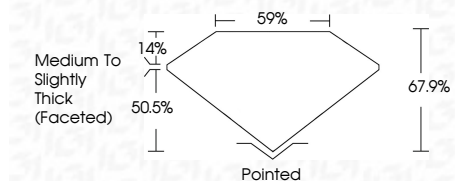
**CLARITY**

IF	VVS <sup>1-2</sup>	VS <sup>1-2</sup>	SI <sup>1-2</sup>	I <sup>1-3</sup>
Internally Flawless	Very Very Slightly Included	Very Slightly Included	Slightly Included	Included

**COLOR**

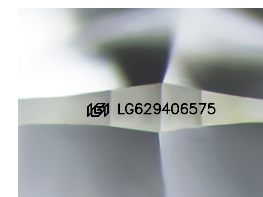
D	E	F	G	H	I	J	Faint	Very Light	Light
---	---	---	---	---	---	---	-------	------------	-------

April 13, 2024  
IGI Report Number **LG629406575**  
Description **LABORATORY GROWN  
DIAMOND**  
Shape and Cutting Style **CUSHION BRILLIANT**  
Measurements **6.75 X 5.49 X 3.73 MM**  
**GRADING RESULTS**  
Carat Weight **1.06 CARAT**  
Color Grade **F**  
Clarity Grade **VS 1**



**ADDITIONAL GRADING INFORMATION**

Polish **EXCELLENT**  
Symmetry **EXCELLENT**  
Fluorescence **NONE**  
Inscription(s) **IGI LG629406575**  
Comments: This Laboratory Grown Diamond was created by Chemical Vapor Deposition (CVD) growth process and may include post-growth treatment. Type IIa



Sample Image Used



**IGI**

April 13, 2024  
IGI Report No **LG629406575**  
**CUSHION BRILLIANT**  
6.75 X 5.49 X 3.73 MM  
Carat Weight **1.06 CARAT**  
Color Grade **F**  
Clarity Grade **VS 1**  
Depth **67.9%**  
Table **59%**  
Girdle **Medium to Slightly Thick (Faceted)**  
Culet **Pointed**  
Polish **EXCELLENT**  
Symmetry **EXCELLENT**  
Fluorescence **NONE**  
Inscription(s) **IGI LG629406575**

Comments: This Laboratory Grown Diamond was created by Chemical Vapor Deposition (CVD) growth process and may include post-growth treatment. Type IIa