



**ELECTRONIC COPY**

**LABORATORY GROWN DIAMOND REPORT**

April 16, 2024  
 IGI Report Number **LG629408406**  
 Description **LABORATORY GROWN  
DIAMOND**  
 Shape and Cutting Style **ROUND BRILLIANT**  
 Measurements **10.13 - 10.16 X 6.24 MM**

**GRADING RESULTS**

Carat Weight **3.97 CARATS**  
 Color Grade **G**  
 Clarity Grade **VS 1**  
 Cut Grade **IDEAL**

**ADDITIONAL GRADING INFORMATION**

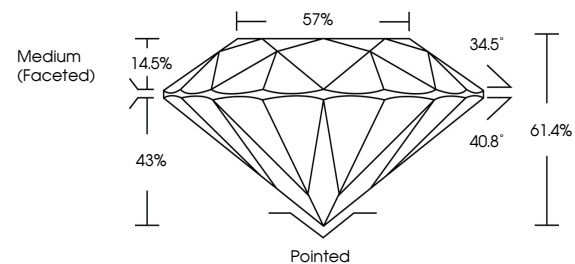
Polish **EXCELLENT**  
 Symmetry **EXCELLENT**  
 Fluorescence **NONE**  
 Inscription(s) **IGI LG629408406**

Comments: This Laboratory Grown Diamond was created by Chemical Vapor Deposition (CVD) growth process and may include post-growth treatment. Type IIa

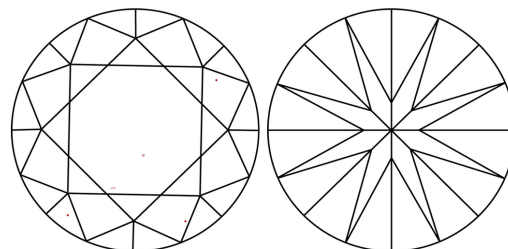
**LABORATORY GROWN DIAMOND REPORT**

**LG629408406**  
 Report verification at [igi.org](http://igi.org)

**PROPORTIONS**



**CLARITY CHARACTERISTICS**



**KEY TO SYMBOLS**

Red symbols indicate internal characteristics.  
 Green symbols indicate external characteristics.

**LABORATORY GROWN  
DIAMOND REPORT**

**GRADING SCALES**

**CLARITY**

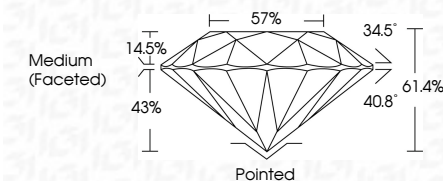
| IF                     | VVS <sup>1-2</sup>             | VS <sup>1-2</sup>         | SI <sup>1-2</sup>    | I <sup>1-3</sup> |
|------------------------|--------------------------------|---------------------------|----------------------|------------------|
| Internally<br>Flawless | Very Very<br>Slightly Included | Very<br>Slightly Included | Slightly<br>Included | Included         |

**COLOR**

| D | E | F | G | H | I | J | Faint | Very Light | Light |
|---|---|---|---|---|---|---|-------|------------|-------|
|---|---|---|---|---|---|---|-------|------------|-------|

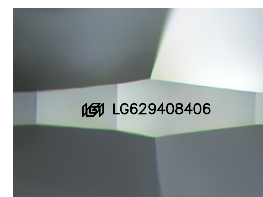
**LABORATORY GROWN DIAMOND REPORT**

April 16, 2024  
 IGI Report Number **LG629408406**  
 Description **LABORATORY GROWN  
DIAMOND**  
 Shape and Cutting Style **ROUND BRILLIANT**  
 Measurements **10.13 - 10.16 X 6.24 MM**  
**GRADING RESULTS**  
 Carat Weight **3.97 CARATS**  
 Color Grade **G**  
 Clarity Grade **VS 1**  
 Cut Grade **IDEAL**



**ADDITIONAL GRADING INFORMATION**

Polish **EXCELLENT**  
 Symmetry **EXCELLENT**  
 Fluorescence **NONE**  
 Inscription(s) **IGI LG629408406**  
 Comments: This Laboratory Grown Diamond was created by Chemical Vapor Deposition (CVD) growth process and may include post-growth treatment. Type IIa



Sample Image Used



**IGI**

|                           |                           |                         |              |             |               |           |       |       |                  |         |           |           |              |                 |
|---------------------------|---------------------------|-------------------------|--------------|-------------|---------------|-----------|-------|-------|------------------|---------|-----------|-----------|--------------|-----------------|
| April 16, 2024            | IGI Report No LG629408406 | ROUND BRILLIANT         | 3.97 CARATS  | G           | VS 1          | IDEAL     | 61.4% | 57%   | Medium (Faceted) | Pointed | EXCELLENT | EXCELLENT | NONE         | IGI LG629408406 |
| IGI Report No LG629408406 | ROUND BRILLIANT           | 10.13 - 10.16 X 6.24 MM | Carat Weight | Color Grade | Clarity Grade | Cut Grade | Depth | Table | Girdle           | Culet   | Polish    | Symmetry  | Fluorescence | Inscription(s)  |

Comments: This Laboratory Grown Diamond was created by Chemical Vapor Deposition (CVD) growth process and may include post-growth treatment. Type IIa