



ELECTRONIC COPY

LABORATORY GROWN DIAMOND REPORT

April 12, 2024	
IGI Report Number	LG629418844
Description	LABORATORY GROWN DIAMOND
Shape and Cutting Style	ROUND BRILLIANT
Measurements	6.60 - 6.65 X 4.07 MM
GRADING RESULTS	
Carat Weight	1.10 CARAT
Color Grade	F
Clarity Grade	VVS 2
Cut Grade	IDEAL

ADDITIONAL GRADING INFORMATION

Polish	EXCELLENT
Symmetry	EXCELLENT
Fluorescence	NONE
Inscription(s)	 LG629418844

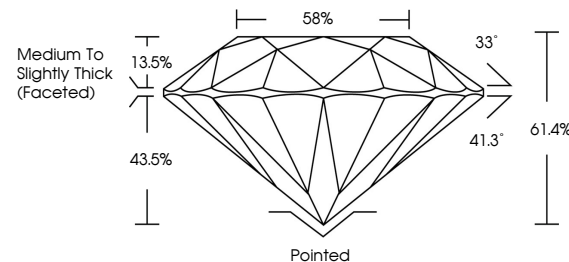
Comments: This Laboratory Grown Diamond was created by Chemical Vapor Deposition (CVD) growth process and may include post-growth treatment.
Type IIa

LABORATORY GROWN DIAMOND REPORT

LG629418844

Report verification at igi.org

PROPORTIONS



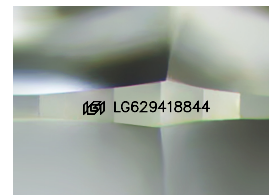
GRADING SCALES

CLARITY

IF	VVS ¹⁻²	VS ¹⁻²	SI ¹⁻²	I ¹⁻³
Internally Flawless	Very Very Slightly Included	Very Slightly Included	Slightly Included	Included

COLOR

D E F G H I J Faint Very Light Light



Sample Image Used



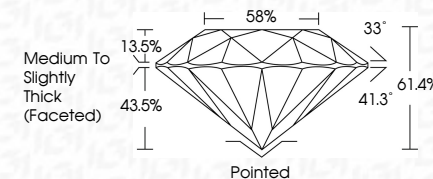
© IGI 2020, International Gemological Institute

FD - 10 20

www.igi.org

LABORATORY GROWN DIAMOND REPORT

April 12, 2024	
IGI Report Number	LG629418844
Description	LABORATORY GROWN DIAMOND
Shape and Cutting Style	ROUND BRILLIANT
Measurements	6.60 - 6.65 X 4.07 MM
GRADING RESULTS	
Carat Weight	1.10 CARAT
Color Grade	F
Clarity Grade	VVS 2
Cut Grade	IDEAL



ADDITIONAL GRADING INFORMATION

Polish	EXCELLENT
Symmetry	EXCELLENT
Fluorescence	NONE
Inscription(s)	 LG629418844

Comments: This Laboratory Grown Diamond was created by Chemical Vapor Deposition (CVD) growth process and may include post-growth treatment.
Type IIa



IG

April 12, 2024
GJ Report No 1G629A18844

Report No. LG62
POUND BRILLIANT

5.60 - 6.65 X 4.07 MM

Carat Weight
1.10 CARAT

Color Grade	F
-------------	---

Clarity Grade	Cut Grade	IDEAL	VVS 2
---------------	-----------	-------	-------

Depth	61.4%	50%
Total		

Table	Medium To Slightly	55%
Girdle		

Thick (Faceted)

[illegible]

Symmetry

Fluorescence	Inscription(s)	None
		151 LG629418844

Comments:

This Laboratory Grown Diamond was created by Chemical Vapor Deposition

(CVD) growth process and may include post-growth treatment.

Type IIa