



ELECTRONIC COPY

LABORATORY GROWN DIAMOND REPORT

April 5, 2024
 IGI Report Number **LG629433369**
 Description **LABORATORY GROWN
DIAMOND**
 Shape and Cutting Style **CUT CORNERED RECTANGULAR
MODIFIED BRILLIANT**
 Measurements **7.26 X 4.97 X 3.27 MM**

GRADING RESULTS

Carat Weight **1.01 CARAT**
 Color Grade **D**
 Clarity Grade **VS 1**

ADDITIONAL GRADING INFORMATION

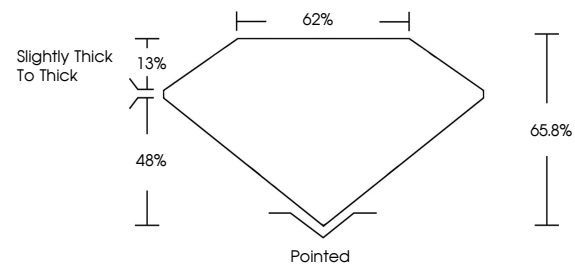
Polish **EXCELLENT**
 Symmetry **EXCELLENT**
 Fluorescence **NONE**
 Inscription(s) **IGI LG629433369**

Comments: This Laboratory Grown Diamond was created by Chemical Vapor Deposition (CVD) growth process and may include post-growth treatment. Type IIa

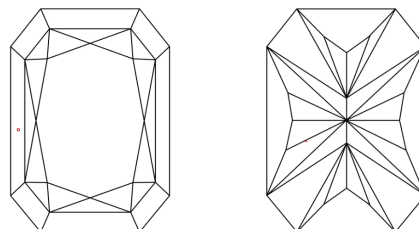
LABORATORY GROWN DIAMOND REPORT

LG629433369
 Report verification at igi.org

PROPORTIONS



CLARITY CHARACTERISTICS



KEY TO SYMBOLS

Red symbols indicate internal characteristics.
 Green symbols indicate external characteristics.

**LABORATORY GROWN
DIAMOND REPORT**

GRADING SCALES

CLARITY

IF	VVS ¹⁻²	VS ¹⁻²	SI ¹⁻²	I ¹⁻³
Internally Flawless	Very Very Slightly Included	Very Slightly Included	Slightly Included	Included

COLOR

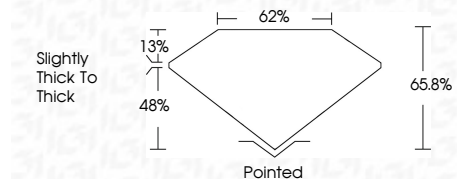
D	E	F	G	H	I	J	Faint	Very Light	Light
---	---	---	---	---	---	---	-------	------------	-------

LABORATORY GROWN DIAMOND REPORT

April 5, 2024
 IGI Report Number **LG629433369**
 Description **LABORATORY GROWN
DIAMOND**
 Shape and Cutting Style **CUT CORNERED
RECTANGULAR MODIFIED
BRILLIANT**
 Measurements **7.26 X 4.97 X 3.27 MM**

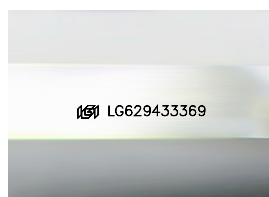
GRADING RESULTS

Carat Weight **1.01 CARAT**
 Color Grade **D**
 Clarity Grade **VS 1**



ADDITIONAL GRADING INFORMATION

Polish **EXCELLENT**
 Symmetry **EXCELLENT**
 Fluorescence **NONE**
 Inscription(s) **IGI LG629433369**
 Comments: This Laboratory Grown Diamond was created by Chemical Vapor Deposition (CVD) growth process and may include post-growth treatment. Type IIa



Sample Image Used



IGI

April 5, 2024
 IGI Report No **LG629433369**
CUT CORNERED RECT. MODIFIED BRILLIANT
7.26 X 4.97 X 3.27 MM
 Carat Weight **1.01 CARAT**
 Color Grade **D**
 Clarity Grade **VS 1**
 Depth **65.8%**
 Table **62%**
 Girdle **Slightly thick to thick**
 Culet **Pointed**
 Polish **EXCELLENT**
 Symmetry **EXCELLENT**
 Fluorescence **NONE**
 Inscription(s) **IGI LG629433369**

Comments: This Laboratory Grown Diamond was created by Chemical Vapor Deposition (CVD) growth process and may include post-growth treatment. Type IIa