



ELECTRONIC COPY

LG629441729 Report verification at igi.org



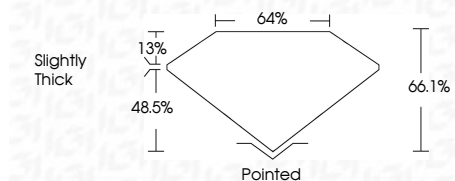
May 17, 2024 IGI Report Number LG629441729 Description LABORATORY GROWN DIAMOND

Shape and Cutting Style CUT CORNERED RECTANGULAR MODIFIED BRILLIANT

Measurements 8.23 X 5.46 X 3.61 MM

GRADING RESULTS

Carat Weight 1.43 CARAT Color Grade E Clarity Grade VVS 2



ADDITIONAL GRADING INFORMATION

Polish EXCELLENT Symmetry EXCELLENT Fluorescence NONE Inscription(s) IGI LG629441729 Comments: As Grown - No indication of post-growth treatment. This Laboratory Grown Diamond was created by High Pressure High Temperature (HPHT) growth process. Type II



May 17, 2024 IGI Report No. LG629441729 CUT CORNERED RECT. MODIFIED BRILLIANT 8.23 X 5.46 X 3.61 MM 1.43 CARAT E VVS 2 66.1% 64% Slightly Thick Pointed EXCELLENT EXCELLENT NONE IGI LG629441729 Comments: As Grown - No indication of post-growth treatment. This Laboratory Grown Diamond was created by High Pressure High Temperature (HPHT) growth process. Type II

LABORATORY GROWN DIAMOND REPORT

May 17, 2024 IGI Report Number LG629441729 Description LABORATORY GROWN DIAMOND Shape and Cutting Style CUT CORNERED RECTANGULAR MODIFIED BRILLIANT Measurements 8.23 X 5.46 X 3.61 MM

GRADING RESULTS

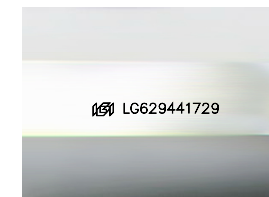
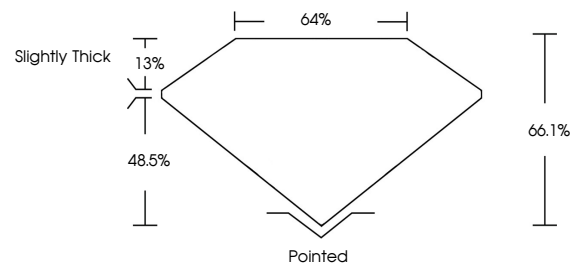
Carat Weight 1.43 CARAT Color Grade E Clarity Grade VVS 2

ADDITIONAL GRADING INFORMATION

Polish EXCELLENT Symmetry EXCELLENT Fluorescence NONE Inscription(s) IGI LG629441729

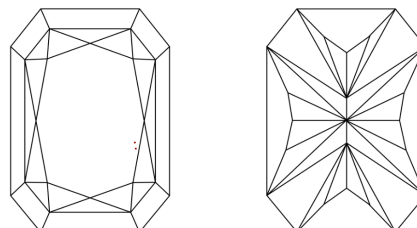
Comments: As Grown - No indication of post-growth treatment. This Laboratory Grown Diamond was created by High Pressure High Temperature (HPHT) growth process. Type II

PROPORTIONS



Sample Image Used

CLARITY CHARACTERISTICS



KEY TO SYMBOLS

Red symbols indicate internal characteristics. Green symbols indicate external characteristics.

COLOR

D E F G H I J Faint Very Light Light

CLARITY

IF VVS 1-2 VS 1-2 SI 1-2 I 1-3 Internally Flawless Very Very Slightly Included Very Slightly Included Slightly Included Included

