



**INTERNATIONAL  
GEMOLOGICAL  
INSTITUTE**

**ELECTRONIC COPY**

## LABORATORY GROWN DIAMOND REPORT

April 13, 2024	
IGI Report Number	LG629468610
Description	LABORATORY GROWN DIAMOND
Shape and Cutting Style	CUT CORNERED RECTANGULAR MODIFIED BRILLIANT
Measurements	10.38 X 7.02 X 4.42 MM

## GRADING RESULTS

Carat Weight	3.03 CARATS
Color Grade	FANCY VIVID PINK
Clarity Grade	VS 2

### ADDITIONAL GRADING INFORMATION

Polish	EXCELLENT
Symmetry	EXCELLENT
Fluorescence	SLIGHT
Inscription(s)	 LG629468610

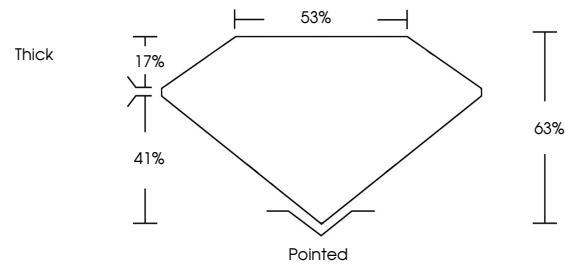
Comments: This Laboratory Grown Diamond was created by Chemical Vapor Deposition (CVD) growth process.  
Indications of post-growth treatment.

Secondary color: Brown

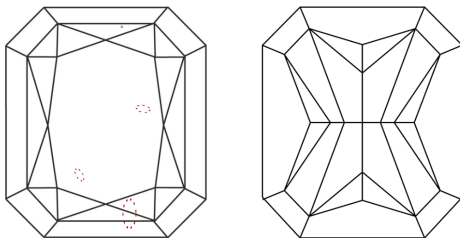
## LABORATORY GROWN DIAMOND REPORT

LG629468610  
Report verification at [igi.org](https://igi.org)

## PROPORTIONS



## CLARITY CHARACTERISTICS



## KEY TO SYMBOLS

Red symbols indicate internal characteristics.  
Green symbols indicate external characteristics.

LABORATORY GROWN  
DIAMOND REPORT

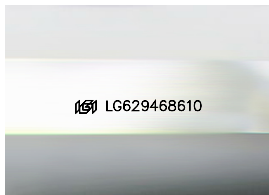
## GRADING SCALES

## CLARITY

IF	VVS <sup>1-2</sup>	VS <sup>1-2</sup>	SI <sup>1-2</sup>	I <sup>1-3</sup>
Internally Flawless	Very Very Slightly Included	Very Slightly Included	Slightly Included	Included

**COLOR**

D	E	F	G	H	I	J	Faint	Very Light	Light
Light Tint			Fancy Light			Fancy	Fancy Intense	Fancy Vivid	



Sample Image Used

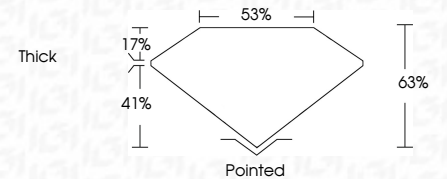


© IGI 2020, International Gemological Institute

FD - 10 20

## LABORATORY GROWN DIAMOND REPORT

April 13, 2024	
IGI Report Number	LG629468610
Description	LABORATORY GROWN DIAMOND
Shape and Cutting Style	CUT CORNERED RECTANGULAR MODIFIED BRILLIANT
Measurements	10.38 X 7.02 X 4.42 MM
<b>GRADING RESULTS</b>	
Carat Weight	3.03 CARATS
Color Grade	FANCY VIVID PINK
Clarity Grade	VS 2



### ADDITIONAL GRADING INFORMATION

Polish	EXCELLENT
Symmetry	EXCELLENT
Fluorescence	SLIGHT
Inscription(s)	<del>151</del> LG629468610
<p>Comments: This Laboratory Grown Diamond was created by Chemical Vapor Deposition (CVD) growth process.</p> <p>Indications of post-growth treatment.</p>	

Secondary color: Brown



IGI

April 13, 2024	Net Report No. LG29466810	
	CUT CONFIRMED RECT. MODIFIED BRILLIANT	
	Carat Weight	3.03 CARATS
	10.38 x 7.02 x 4.42 MM	FANCY VIVID PINK
	Color Grade	Vs2
	Clarity Grade	59%
	Depth	58%
	Table	Thick
	Grade	
	Culet	Polished
	Pavil	EXCELLENT
	Symmetry	EXCELLENT
	Fluorescence	SLIGHT
	Inscriptions	1891 LG29466810

**Comments:**  
This Laboratory Grown Diamond was created by Chemical Vapor Deposition (CVD) growth process.  
indications of post-growth treatment.  
Secondary color: Brown

**www.igi.org**