



**ELECTRONIC COPY**

**LABORATORY GROWN DIAMOND REPORT**

LG629471234

Report verification at igi.org

**LABORATORY GROWN  
DIAMOND REPORT**

**LABORATORY GROWN DIAMOND REPORT**

**LABORATORY GROWN DIAMOND REPORT**

April 16, 2024  
 IGI Report Number **LG629471234**  
 Description **LABORATORY GROWN  
DIAMOND**  
 Shape and Cutting Style **PRINCESS CUT**  
 Measurements **9.30 X 8.95 X 6.68 MM**

**GRADING RESULTS**

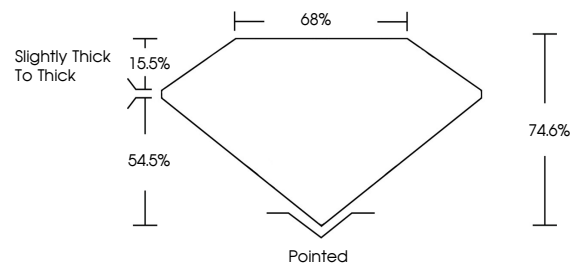
Carat Weight **5.04 CARATS**  
 Color Grade **FANCY INTENSE PINK**  
 Clarity Grade **VS 1**

**ADDITIONAL GRADING INFORMATION**

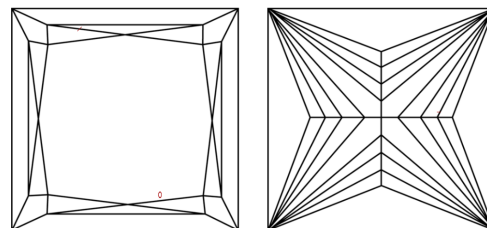
Polish **EXCELLENT**  
 Symmetry **VERY GOOD**  
 Fluorescence **SLIGHT**  
 Inscription(s) **IGI LG629471234**

Comments: This Laboratory Grown Diamond was created by Chemical Vapor Deposition (CVD) growth process.  
 Indications of post-growth treatment.

**PROPORTIONS**



**CLARITY CHARACTERISTICS**



**KEY TO SYMBOLS**

Red symbols indicate internal characteristics.  
 Green symbols indicate external characteristics.

**GRADING SCALES**

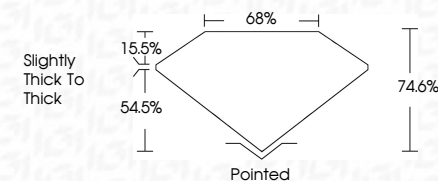
**CLARITY**

IF	VVS <sup>1-2</sup>	VS <sup>1-2</sup>	SI <sup>1-2</sup>	I <sup>1-3</sup>
Internally Flawless	Very Very Slightly Included	Very Slightly Included	Slightly Included	Included

**COLOR**

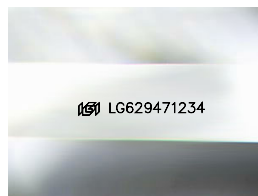
D	E	F	G	H	I	J	Faint	Very Light	Light
Light Tint	Fancy Light	Fancy	Fancy Intense	Fancy Vivid					

April 16, 2024  
 IGI Report Number **LG629471234**  
 Description **LABORATORY GROWN  
DIAMOND**  
 Shape and Cutting Style **PRINCESS CUT**  
 Measurements **9.30 X 8.95 X 6.68 MM**  
**GRADING RESULTS**  
 Carat Weight **5.04 CARATS**  
 Color Grade **FANCY INTENSE PINK**  
 Clarity Grade **VS 1**



**ADDITIONAL GRADING INFORMATION**

Polish **EXCELLENT**  
 Symmetry **VERY GOOD**  
 Fluorescence **SLIGHT**  
 Inscription(s) **IGI LG629471234**  
 Comments: This Laboratory Grown Diamond was created by Chemical Vapor Deposition (CVD) growth process.  
 Indications of post-growth treatment.



Sample Image Used



**IGI**

April 16, 2024  
 IGI Report No. **LG629471234**  
**PRINCESS CUT**  
**5.04 CARATS**  
 Carat Weight  
**FANCY INTENSE PINK**  
 Color Grade  
**VS 1**  
 Clarity Grade  
**74.6%**  
 Depth  
**68%**  
 Table  
**Slightly thick to thick**  
 Girdle  
**Pointed**  
 Culet  
**EXCELLENT**  
 Polish  
**VERY GOOD**  
 Symmetry  
**SLIGHT**  
 Fluorescence  
**IGI LG629471234**  
 Inscription(s)

Comments: This Laboratory Grown Diamond was created by Chemical Vapor Deposition (CVD) growth process.  
 Indications of post-growth treatment.