



ELECTRONIC COPY

LABORATORY GROWN DIAMOND REPORT

April 9, 2024	
IGI Report Number	LG629472487
Description	LABORATORY GROWN DIAMOND
Shape and Cutting Style	SQUARE CUSHION BRILLIANT
Measurements	7.29 X 7.22 X 4.81 MM

GRADING RESULTS

Carat Weight	1.88 CARAT
Color Grade	F
Clarity Grade	VVS 2

ADDITIONAL GRADING INFORMATION

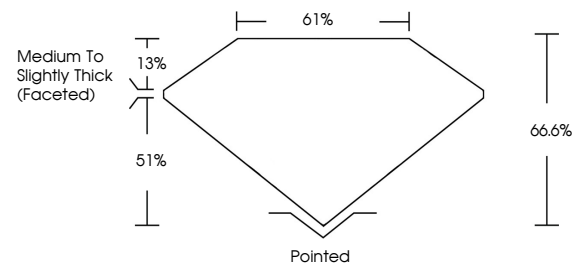
Polish	EXCELLENT
Symmetry	EXCELLENT
Fluorescence	NONE
Inscription(s)	 LG629472487

Comments: This Laboratory Grown Diamond was created by Chemical Vapor Deposition (CVD) growth process and may include post-growth treatment. Type IIa

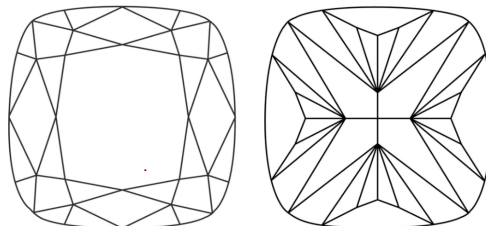
LABORATORY GROWN DIAMOND REPORT

LG629472487
Report verification at igi.org

PROPORTIONS



CLARITY CHARACTERISTICS



KEY TO SYMBOLS

Red symbols indicate internal characteristics.
Green symbols indicate external characteristics.

LABORATORY GROWN
DIAMOND REPORT

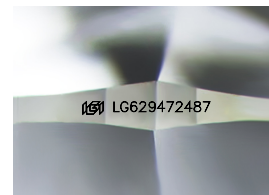
GRADING SCALES

CLARITY

IF	VVS ¹⁻²	VS ¹⁻²	SI ¹⁻²	I ¹⁻³
Internally Flawless	Very Very Slightly Included	Very Slightly Included	Slightly Included	Included

COLOR

D E F G H I J Faint Very Light Light



Sample Image Used



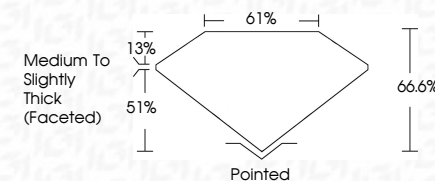
© IGI 2020, International Gemological Institute

FD - 10 20

www.igi.org

LABORATORY GROWN DIAMOND REPORT

April 9, 2024	
IGI Report Number	LG629472487
Description	LABORATORY GROWN DIAMOND
Shape and Cutting Style	SQUARE CUSHION BRILLIANT
Measurements	7.29 X 7.22 X 4.81 MM
GRADING RESULTS	
Carat Weight	1.88 CARAT
Color Grade	F
Clarity Grade	VVS 2



ADDITIONAL GRADING INFORMATION

Polish	EXCELLENT
Symmetry	EXCELLENT
Fluorescence	NONE
Inscription(s)	15 LG629472487

Comments: This Laboratory Grown Diamond was created by Chemical Vapor Deposition (CVD) growth process and may include post-growth treatment.
Type IIa



IG

April 9, 2024	GI Report No. LG59472487	1.88 CAPAT
GI SQUARE CUSHION BRIGHT		F 2
7.29 x 7.12 x 1.82 MM	Corat Weight	W6 2
	Color Grade	64.6%
	Clarity Grade	61%
	Depth	Medium to Slightly Thick (Faced)
	Table	Parried
	Girdle	EXCELLENT
	Fluorescence	EXCELLENT
	Symmetry	NONE
	Inscription(s)	681 LG59472487
Comments:	Grown Vaporizer was created by Chemical Vapor Deposition (CVD) growth process and may include post-growth treatment.	
Type IIa		

Comments:
This Laboratory Grown Diamond was created by Chemical Vapor Deposition (CVD) growth process and may include post-growth treatment.