



**INTERNATIONAL
GEMOLOGICAL
INSTITUTE**

ELECTRONIC COPY

**LABORATORY GROWN
DIAMOND REPORT**

LG629476829

**IGI LABORATORY GROWN
DIAMOND ID REPORT**

April 10, 2024

IGI Report Number **LG629476829**

**CUT CORNERED RECTANGULAR
MODIFIED BRILLIANT**

4.67 X 3.60 X 2.27 MM

Carat Weight 0.33 CARAT
Color Grade D
Clarity Grade VS 1
Polish VERY GOOD
Symmetry VERY GOOD
Fluorescence NONE
Inscription(s) LG629476829

Comments: This Laboratory Grown Diamond was created by Chemical Vapor Deposition (CVD) growth process and may include post-growth treatment. Type Ila

LABORATORY GROWN DIAMOND REPORT

IGI LABORATORY GROWN DIAMOND IDENTIFICATION REPORT

April 10, 2024

IGI Report Number LG629476829

Description LABORATORY GROWN DIAMOND

Shape and Cutting Style CUT CORNERED RECTANGULAR MODIFIED BRILLIANT

Measurements 4.67 X 3.60 X 2.27 MM

GRADING RESULTS

Carat Weight 0.33 CARAT

Color Grade D

Clarity Grade VS 1

ADDITIONAL GRADING INFORMATION

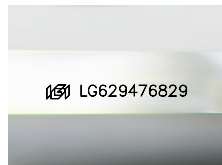
Polish VERY GOOD

Symmetry VERY GOOD

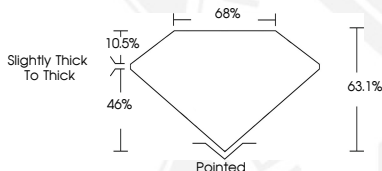
Fluorescence NONE

Inscription(s) LG629476829

Comments: This Laboratory Grown Diamond was created by Chemical Vapor Deposition (CVD) growth process and may include post-growth treatment. Type Ila



Sample Image Used



**IGI LABORATORY GROWN
DIAMOND ID REPORT**

April 10, 2024

IGI Report Number **LG629476829**

**CUT CORNERED RECTANGULAR
MODIFIED BRILLIANT**

4.67 X 3.60 X 2.27 MM

Carat Weight 0.33 CARAT
Color Grade D
Clarity Grade VS 1
Polish VERY GOOD
Symmetry VERY GOOD
Fluorescence NONE
Inscription(s) LG629476829

Comments: This Laboratory Grown Diamond was created by Chemical Vapor Deposition (CVD) growth process and may include post-growth treatment. Type Ila

THIS DOCUMENT WAS PRODUCED WITH THE FOLLOWING SECURITY MEASURES: SPECIAL DOCUMENT PAPER, INK SCREENS, WATERMARK, BACKGROUND DESIGN, HOLOGRAM AND OTHER SECURITY FEATURES NOT LISTED AND DO EXCEED DOCUMENT SECURITY INDUSTRY GUIDELINES.

For terms & conditions and to verify this report, please visit www.igi.org