



ELECTRONIC COPY

LG629488392

Report verification at igi.org

LABORATORY GROWN DIAMOND REPORT

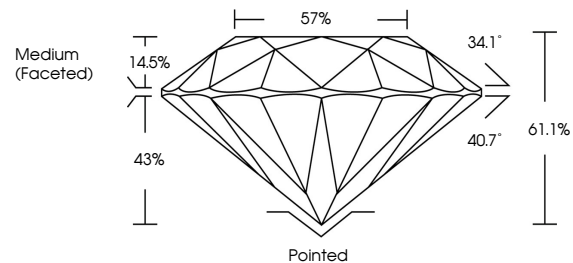
April 10, 2024
IGI Report Number LG629488392
Description LABORATORY GROWN DIAMOND
Shape and Cutting Style ROUND BRILLIANT
Measurements 6.91 - 6.93 X 4.23 MM
GRADING RESULTS
Carat Weight 1.24 CARAT
Color Grade D
Clarity Grade VVS 2
Cut Grade IDEAL

ADDITIONAL GRADING INFORMATION

Polish EXCELLENT
Symmetry EXCELLENT
Fluorescence NONE
Inscription(s) IGI LG629488392

Comments: HEARTS & ARROWS
This Laboratory Grown Diamond was created by Chemical Vapor Deposition (CVD) growth process and may include post-growth treatment. Type IIa

PROPORTIONS



GRADING SCALES

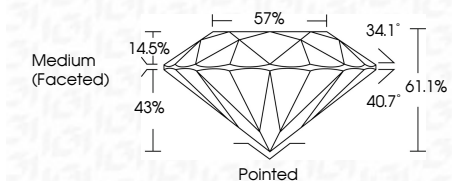
CLARITY

Table with 5 columns: IF, VVS 1-2, VS 1-2, SI 1-2, I 1-3. Row 1: Internally Flawless, Very Very Slightly Included, Very Slightly Included, Slightly Included, Included.

COLOR

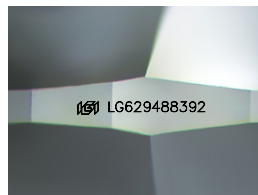
Table with 11 columns: D, E, F, G, H, I, J, Faint, Very Light, Light.

April 10, 2024
IGI Report Number LG629488392
Description LABORATORY GROWN DIAMOND
Shape and Cutting Style ROUND BRILLIANT
Measurements 6.91 - 6.93 X 4.23 MM
GRADING RESULTS
Carat Weight 1.24 CARAT
Color Grade D
Clarity Grade VVS 2
Cut Grade IDEAL



ADDITIONAL GRADING INFORMATION

Polish EXCELLENT
Symmetry EXCELLENT
Fluorescence NONE
Inscription(s) IGI LG629488392
Comments: HEARTS & ARROWS
This Laboratory Grown Diamond was created by Chemical Vapor Deposition (CVD) growth process and may include post-growth treatment. Type IIa



Sample Image Used



Summary table with columns: April 10, 2024, IGI Report No LG629488392, ROUND BRILLIANT, 6.91 - 6.93 X 4.23 MM, 1.24 CARAT, D, VVS 2, IDEAL, 61.1%, 57%, Medium (Faceted), Pointed, EXCELLENT, EXCELLENT, NONE, IGI LG629488392.

Comments: HEARTS & ARROWS
This Laboratory Grown Diamond was created by Chemical Vapor Deposition (CVD) growth process and may include post-growth treatment. Type IIa