



ELECTRONIC COPY

LG629488393

Report verification at igi.org

LABORATORY GROWN DIAMOND REPORT

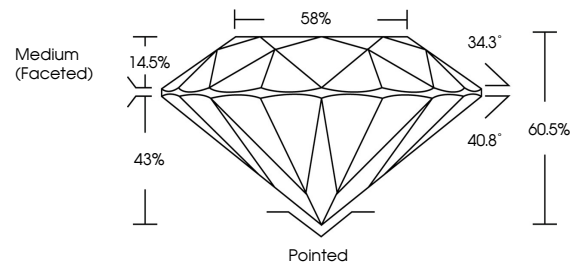
April 10, 2024
IGI Report Number LG629488393
Description LABORATORY GROWN DIAMOND
Shape and Cutting Style ROUND BRILLIANT
Measurements 8.59 - 8.62 X 5.21 MM
GRADING RESULTS
Carat Weight 2.35 CARATS
Color Grade D
Clarity Grade VVS 1
Cut Grade IDEAL

ADDITIONAL GRADING INFORMATION

Polish EXCELLENT
Symmetry EXCELLENT
Fluorescence NONE
Inscription(s) IGI LG629488393

Comments: HEARTS & ARROWS
This Laboratory Grown Diamond was created by Chemical Vapor Deposition (CVD) growth process and may include post-growth treatment.
Type IIa

PROPORTIONS



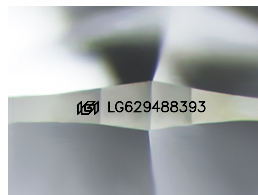
GRADING SCALES

CLARITY

Table with 5 columns: IF, VVS 1-2, VS 1-2, SI 1-2, I 1-3. Row 1: Internally Flawless, Very Very Slightly Included, Very Slightly Included, Slightly Included, Included.

COLOR

Table with 11 columns: D, E, F, G, H, I, J, Faint, Very Light, Light.

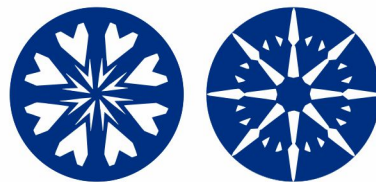
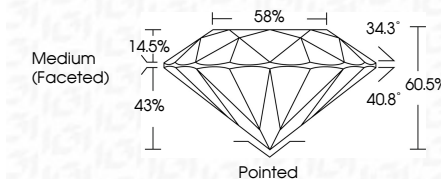


Sample Image Used

April 10, 2024
IGI Report Number LG629488393
Description LABORATORY GROWN DIAMOND
Shape and Cutting Style ROUND BRILLIANT
Measurements 8.59 - 8.62 X 5.21 MM
GRADING RESULTS
Carat Weight 2.35 CARATS
Color Grade D
Clarity Grade VVS 1
Cut Grade IDEAL

ADDITIONAL GRADING INFORMATION

Polish EXCELLENT
Symmetry EXCELLENT
Fluorescence NONE
Inscription(s) IGI LG629488393
Comments: HEARTS & ARROWS
This Laboratory Grown Diamond was created by Chemical Vapor Deposition (CVD) growth process and may include post-growth treatment.
Type IIa



IGI

April 10, 2024
IGI Report No LG629488393
ROUND BRILLIANT
8.59 - 8.62 X 5.21 MM
Carat Weight 2.35 CARATS
Color Grade D
Clarity Grade VVS 1
Cut Grade IDEAL
Depth 60.5%
Table 58%
Girdle Medium (Faceted)
Culet Pointed
Polish EXCELLENT
Symmetry EXCELLENT
Fluorescence NONE
Inscriptions(s) IGI LG629488393
Comments: HEARTS & ARROWS
This Laboratory Grown Diamond was created by Chemical Vapor Deposition (CVD) growth process and may include post-growth treatment.
Type IIa