



ELECTRONIC COPY

LG629496275

Report verification at igi.org

LABORATORY GROWN DIAMOND REPORT

April 13, 2024
IGI Report Number LG629496275
Description LABORATORY GROWN DIAMOND
Shape and Cutting Style ROUND BRILLIANT
Measurements 8.54 - 8.59 X 5.36 MM

GRADING RESULTS

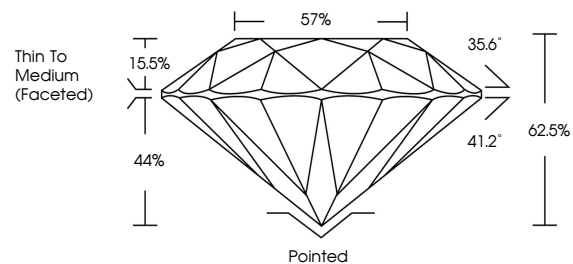
Carat Weight 2.41 CARATS
Color Grade D
Clarity Grade VVS 1
Cut Grade IDEAL

ADDITIONAL GRADING INFORMATION

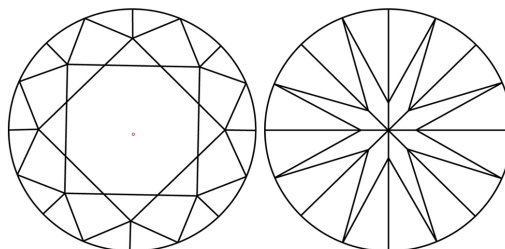
Polish EXCELLENT
Symmetry EXCELLENT
Fluorescence NONE
Inscription(s) IGI LG629496275

Comments: As Grown - No indication of post-growth treatment. This Laboratory Grown Diamond was created by High Pressure High Temperature (HPHT) growth process. Type II

PROPORTIONS



CLARITY CHARACTERISTICS



KEY TO SYMBOLS

Red symbols indicate internal characteristics. Green symbols indicate external characteristics.

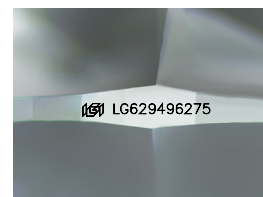
GRADING SCALES

CLARITY

Table mapping clarity grades (IF, VVS 1-2, VS 1-2, SI 1-2, I 1-3) to their descriptions (Internally Flawless, Very Very Slightly Included, etc.)

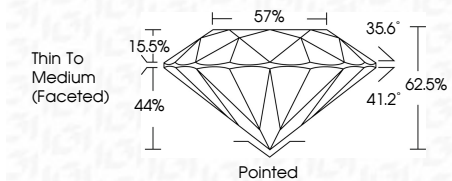
COLOR

Table mapping color grades (D, E, F, G, H, I, J, Faint, Very Light, Light) to their descriptions



Sample Image Used

April 13, 2024
IGI Report Number LG629496275
Description LABORATORY GROWN DIAMOND
Shape and Cutting Style ROUND BRILLIANT
Measurements 8.54 - 8.59 X 5.36 MM
GRADING RESULTS
Carat Weight 2.41 CARATS
Color Grade D
Clarity Grade VVS 1
Cut Grade IDEAL



ADDITIONAL GRADING INFORMATION

Polish EXCELLENT
Symmetry EXCELLENT
Fluorescence NONE
Inscription(s) IGI LG629496275
Comments: As Grown - No indication of post-growth treatment. This Laboratory Grown Diamond was created by High Pressure High Temperature (HPHT) growth process. Type II



Summary table of report details: April 13, 2024, IGI Report No. LG629496275, ROUND BRILLIANT, 2.41 CARATS, D, VVS 1, IDEAL, 62.5%, 57%, Thin To Medium (Faceted), Polished, EXCELLENT, EXCELLENT, NONE, IGI LG629496275. Comments: As Grown - No indication of post-growth treatment. This Laboratory Grown Diamond was created by High Pressure High Temperature (HPHT) growth process. Type II