



ELECTRONIC COPY

LABORATORY GROWN DIAMOND REPORT

April 15, 2024
 IGI Report Number **LG629496481**
 Description **LABORATORY GROWN
DIAMOND**
 Shape and Cutting Style **CUSHION MODIFIED BRILLIANT**
 Measurements **11.04 X 8.15 X 5.14 MM**

GRADING RESULTS

Carat Weight **4.09 CARATS**
 Color Grade **D**
 Clarity Grade **VS 1**

ADDITIONAL GRADING INFORMATION

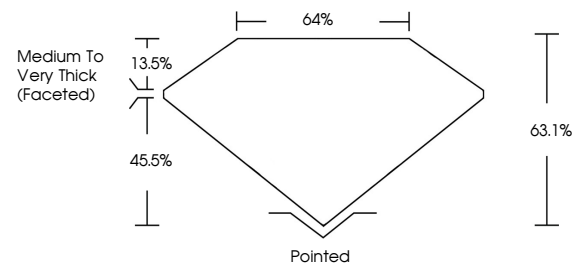
Polish **EXCELLENT**
 Symmetry **EXCELLENT**
 Fluorescence **NONE**
 Inscription(s) **IGI LG629496481**

Comments: This Laboratory Grown Diamond was created by Chemical Vapor Deposition (CVD) growth process and may include post-growth treatment. Type IIa

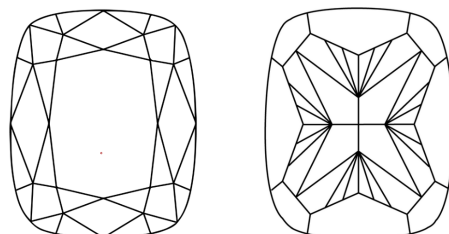
LABORATORY GROWN DIAMOND REPORT

LG629496481
 Report verification at igi.org

PROPORTIONS



CLARITY CHARACTERISTICS



KEY TO SYMBOLS

Red symbols indicate internal characteristics.
 Green symbols indicate external characteristics.

**LABORATORY GROWN
DIAMOND REPORT**

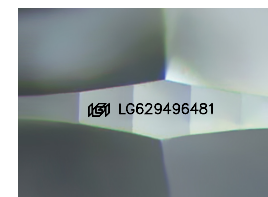
GRADING SCALES

CLARITY

IF	VVS ¹⁻²	VS ¹⁻²	SI ¹⁻²	I ¹⁻³
Internally Flawless	Very Very Slightly Included	Very Slightly Included	Slightly Included	Included

COLOR

D	E	F	G	H	I	J	Faint	Very Light	Light
---	---	---	---	---	---	---	-------	------------	-------



Sample Image Used

LABORATORY GROWN DIAMOND REPORT

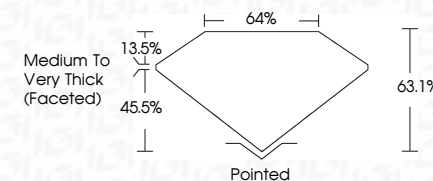
April 15, 2024
 IGI Report Number **LG629496481**
 Description **LABORATORY GROWN
DIAMOND**
 Shape and Cutting Style **CUSHION MODIFIED
BRILLIANT**
 Measurements **11.04 X 8.15 X 5.14 MM**

GRADING RESULTS

Carat Weight **4.09 CARATS**
 Color Grade **D**
 Clarity Grade **VS 1**

ADDITIONAL GRADING INFORMATION

Polish **EXCELLENT**
 Symmetry **EXCELLENT**
 Fluorescence **NONE**
 Inscription(s) **IGI LG629496481**
 Comments: This Laboratory Grown Diamond was created by Chemical Vapor Deposition (CVD) growth process and may include post-growth treatment. Type IIa



IGI



April 15, 2024
 IGI Report No **LG629496481**
CUSHION MODIFIED BRILLIANT
11.04 X 8.15 X 5.14 MM
4.09 CARATS
 Carat Weight **D**
 Color Grade **VS 1**
 Depth **63.1%**
 Table **45.5%**
 Girdle **Medium to Very Thick (Faceted)**
 Culet **Pointed**
 Polish **EXCELLENT**
 Symmetry **EXCELLENT**
 Fluorescence **NONE**
 Inscription(s) **IGI LG629496481**

Comments: This Laboratory Grown Diamond was created by Chemical Vapor Deposition (CVD) growth process and may include post-growth treatment. Type IIa