



**INTERNATIONAL  
GEMOLOGICAL  
INSTITUTE**

**ELECTRONIC COPY**

**LABORATORY GROWN  
DIAMOND REPORT**

**LG629496745**

**IGI LABORATORY GROWN  
DIAMOND ID REPORT**

April 11, 2024

IGI Report Number **LG629496745**

**CUT CORNERED RECTANGULAR  
MODIFIED BRILLIANT**

**6.87 X 4.97 X 3.27 MM**

Carat Weight 0.96 CARAT  
Color Grade F  
Clarity Grade VS 1  
Polish EXCELLENT  
Symmetry EXCELLENT  
Fluorescence NONE  
Inscription(s) IGI LG629496745

Comments: This Laboratory Grown Diamond was created by Chemical Vapor Deposition (CVD) growth process and may include post-growth treatment. Type Ila

**LABORATORY GROWN DIAMOND REPORT**

**IGI LABORATORY GROWN DIAMOND IDENTIFICATION REPORT**

April 11, 2024

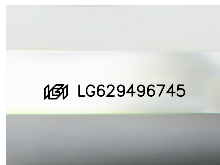
IGI Report Number

LG629496745

Description **LABORATORY GROWN DIAMOND**

Shape and Cutting Style **CUT CORNERED RECTANGULAR MODIFIED  
BRILLIANT**

Measurements **6.87 X 4.97 X 3.27 MM**



Sample Image Used

**GRADING RESULTS**

Carat Weight 0.96 CARAT

Color Grade F

Clarity Grade VS 1

**ADDITIONAL GRADING INFORMATION**

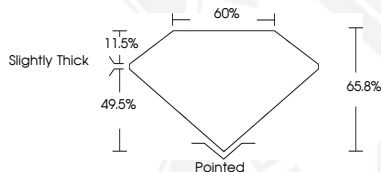
Polish EXCELLENT

Symmetry EXCELLENT

Fluorescence NONE

Inscription(s) IGI LG629496745

Comments: This Laboratory Grown Diamond was created by Chemical Vapor Deposition (CVD) growth process and may include post-growth treatment. Type Ila



**IGI LABORATORY GROWN  
DIAMOND ID REPORT**

April 11, 2024

IGI Report Number **LG629496745**

**CUT CORNERED RECTANGULAR  
MODIFIED BRILLIANT**

**6.87 X 4.97 X 3.27 MM**

Carat Weight 0.96 CARAT  
Color Grade F  
Clarity Grade VS 1  
Polish EXCELLENT  
Symmetry EXCELLENT  
Fluorescence NONE  
Inscription(s) IGI LG629496745

Comments: This Laboratory Grown Diamond was created by Chemical Vapor Deposition (CVD) growth process and may include post-growth treatment. Type Ila



THIS DOCUMENT WAS PRODUCED WITH THE FOLLOWING SECURITY MEASURES: SPECIAL DOCUMENT PAPER, INK SCREENS, WATERMARK, BACKGROUND DESIGN, HOLOGRAM AND OTHER SECURITY FEATURES NOT LISTED AND DO EXCEED DOCUMENT SECURITY INDUSTRY GUIDELINES.

For terms & conditions and to verify this report, please visit [www.igi.org](http://www.igi.org)