



**ELECTRONIC COPY**

**LABORATORY GROWN DIAMOND REPORT**

LG630431494  
Report verification at igi.org

**LABORATORY GROWN  
DIAMOND REPORT**

**LABORATORY GROWN DIAMOND REPORT**

**LABORATORY GROWN DIAMOND REPORT**

April 18, 2024  
IGI Report Number **LG630431494**  
Description **LABORATORY GROWN  
DIAMOND**  
Shape and Cutting Style **MARQUISE BRILLIANT**  
Measurements **18.43 X 8.53 X 5.30 MM**

**GRADING RESULTS**

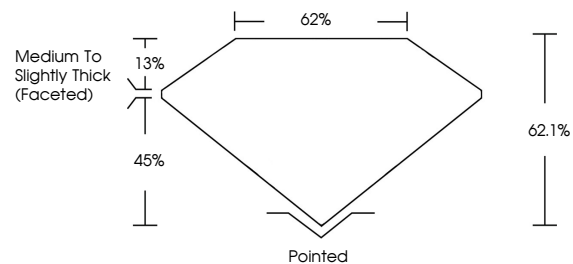
Carat Weight **4.73 CARATS**  
Color Grade **F**  
Clarity Grade **SI 1**

**ADDITIONAL GRADING INFORMATION**

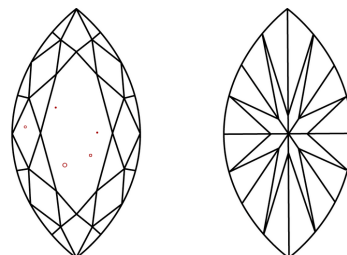
Polish **EXCELLENT**  
Symmetry **EXCELLENT**  
Fluorescence **NONE**  
Inscription(s) **IGI LG630431494**

Comments: This Laboratory Grown Diamond was created by Chemical Vapor Deposition (CVD) growth process and may include post-growth treatment. Type IIa

**PROPORTIONS**



**CLARITY CHARACTERISTICS**



**KEY TO SYMBOLS**

Red symbols indicate internal characteristics.  
Green symbols indicate external characteristics.

**GRADING SCALES**

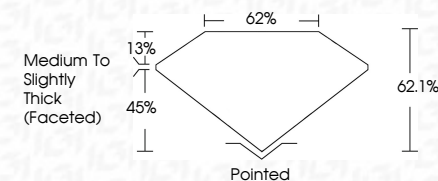
**CLARITY**

IF	VVS <sup>1-2</sup>	VS <sup>1-2</sup>	SI <sup>1-2</sup>	I <sup>1-3</sup>
Internally Flawless	Very Very Slightly Included	Very Slightly Included	Slightly Included	Included

**COLOR**

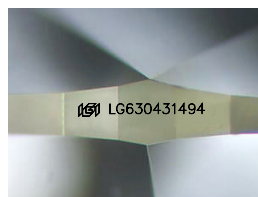
D	E	F	G	H	I	J	Faint	Very Light	Light
---	---	---	---	---	---	---	-------	------------	-------

April 18, 2024  
IGI Report Number **LG630431494**  
Description **LABORATORY GROWN  
DIAMOND**  
Shape and Cutting Style **MARQUISE BRILLIANT**  
Measurements **18.43 X 8.53 X 5.30 MM**  
**GRADING RESULTS**  
Carat Weight **4.73 CARATS**  
Color Grade **F**  
Clarity Grade **SI 1**



**ADDITIONAL GRADING INFORMATION**

Polish **EXCELLENT**  
Symmetry **EXCELLENT**  
Fluorescence **NONE**  
Inscription(s) **IGI LG630431494**  
Comments: This Laboratory Grown Diamond was created by Chemical Vapor Deposition (CVD) growth process and may include post-growth treatment. Type IIa



Sample Image Used



**IGI**

April 18, 2024  
IGI Report No LG630431494  
**MARQUISE BRILLIANT**  
18.43 X 8.53 X 5.30 MM  
4.73 CARATS  
F  
SI 1  
62.1%  
45%  
62%  
Medium to Slightly Thick (Faceted)  
Pointed  
EXCELLENT  
EXCELLENT  
NONE  
IGI LG630431494

Comments: This Laboratory Grown Diamond was created by Chemical Vapor Deposition (CVD) growth process and may include post-growth treatment. Type IIa